

Bishop Luffa Art Curriculum Map

You may choose to go on to study Art at degree level; or to continue with it just for your own pleasure "The earth without art is just eh...." Banksy

Higher Education

Employment

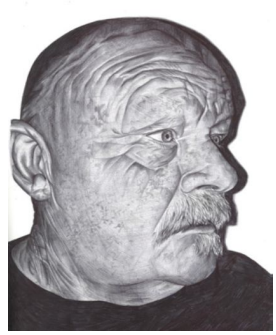
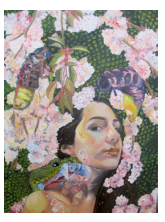
Externally Set assignment:
You will respond to a stimulus, provided by AQA, creating work which provides evidence of your ability to work independently within specified time constraints. You will develop a personal and meaningful response which addresses all the assessment objectives and leads to a finished outcome or a series of related finished outcomes.

You will develop your own ideas informed by artists' research; investigating and exploring a range of media and techniques. You will explore essay writing techniques, to support you with the written component. You will continue to refine your skills and ideas over a series of responses; culminating in a final outcome for your Personal Investigation which is both personal and meaningful.

Building upon the confidence and independence you have gained during Year 12; you will begin Your Personal Investigation. This is the Portfolio component of you're A level Art. This Practical Investigation is instigated by and responds to research into an aspect of Arts' techniques or practitioners and is supported by written material.

13

You will have a confident understanding of the four A level Art level assessment objectives and will know what you will need to do to successfully meet the demands of the A level art specification



The A level course begins with a six-week induction period; an introduction to media, processes and techniques in a series of teacher-led workshop sessions, in response to a given theme. You will have the opportunity to work on a range of scales and experiment with diverse techniques such as darning, weaving, bas relief work, printmaking, photography, drawing and painting.

You will be encouraged to work independently on a series of self led projects; where originality and difference are celebrated.

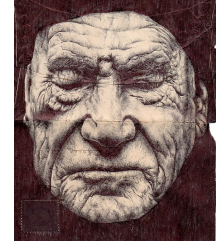
You will be given plenty of extra curricular art enrichment opportunities, such as Life drawing classes, collaborating with art degree students from Chichester Uni, or becoming part of the school in residence at Pallant House Gallery.

You will be guided on how to conduct relevant contextual research and taken to London galleries to explore contemporary Art practice.

12

In your second coursework project "Close up" you will be analysing and researching a range of artists; including the painter Sarah Graham and will be responding to the theme of Close Up using a broad array of media and techniques

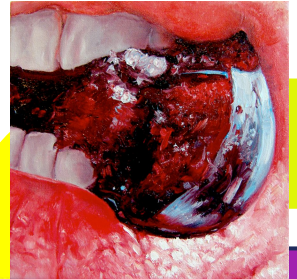
In Year 11 less directed projects are set, giving you more opportunity for independence. You will be expected to effectively develop your own ideas, through purposeful investigation; demonstrating your critical and contextual understanding. You will complete a personal and meaningful final response, during your GCSE Mock exam in November. You will be given time to refine and extend your project work leading towards the final coursework deadline at the beginning of January. From January onwards you will begin work on your Externally Set Assignment, which culminates in a 10 hour GCSE Art Exam in the second half of the Summer Term.



At GCSE, we follow the AQA 8201 Art and Design Syllabus. We begin the course in a structured, teacher-led manner, aiming to build your skills, understanding and confidence quickly. Ultimately, the goal is for us to support you in your independent work, never capping your creativity but promoting an environment in which the individual pursuit of a personal and informed voice can make Art a means of effective communication.

In our first coursework project you will explore the idea of identity; analysing the work of artists to inform the development of your own ideas. You will experiment in a range of media; to include: photography, printmaking, paint, collage and sculpture.

Scaling up drawing using the Grid Technique
You will learn how to use a grid to scale up a high quality photographic image in to a detailed and accurate A2 tonal drawing.

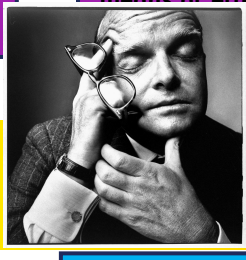
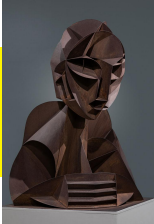


10

In Year 9 you will follow a series of lessons where you can engage in skills-based projects. You will be exposed to a vast range of media and experimental techniques and will be encouraged to become far more independent and confident in your own ability to create exciting, imaginative and personal artwork.

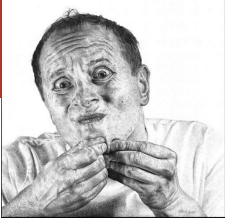
You can create Kooky characters in Clay Or a magnificent expressive self portrait in response to Cubist paintings by Picasso and realist portraits by Heikki Leis

In Year 8 you are introduced to issue-based art and begin to explore and question some of the meanings and motivations behind powerful pieces of Art. You will continue to develop your skills in observational drawing and drawing from the imagination. You will create a range of outcomes in both 2D and 3D.



Create an Urban Street style Portrait of your favourite Icon, transform your hand in to an animal or construct a Fantastical Mask inspired by mythical creatures.

9



8



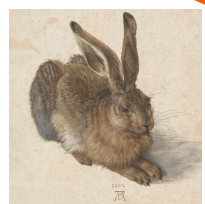
Why not join a year 7 Art club and get making!

SIGN-UP NOW

7

You will learn all about visual elements of line, tone, texture, shape, form and perspective and explore a wide range of media and techniques, including a range of drawing techniques, collage and sculpture. At the same time you will be challenged to create original and exciting works of art.

You will look at the work of some exciting artists to help inspire you when creating your own art work



Welcome to Art at Luffa We believe that Art is the most inclusive of subjects with success available to all; so let's get our art journey started!

ART MAKES CHILDREN POWERFUL