



# Welcome to Wilson House



**Head of House: Mr Keith Allman**

**Tutor: Mrs Alison Copeland / Mrs Nicky Stallard**

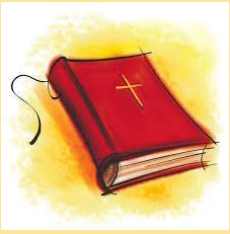


# The role of the Head of House

- To monitor the transition from KS2 to KS3
- To support with any pastoral issues that may arise
- To reward success and hard work
- To keep an eye on pupil progress
- To develop a house identity
- To help pupils achieve their true potential

However – particularly in Year 7 – the tutor is very important!

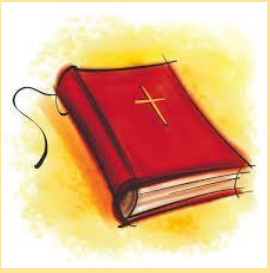




# What's different at Luffa?

- We start early – no matter what time you get up, you'll feel like you're running late
- The school is much bigger than they'll be used to
- Different teachers and different rooms (probably)
- A two week timetable
- 10+ different subjects over two weeks
- Remembering what to bring on which day
- Homework
- School planner

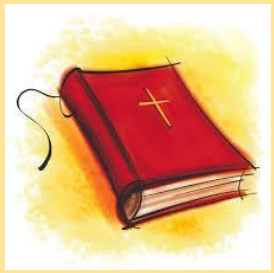




# Next term

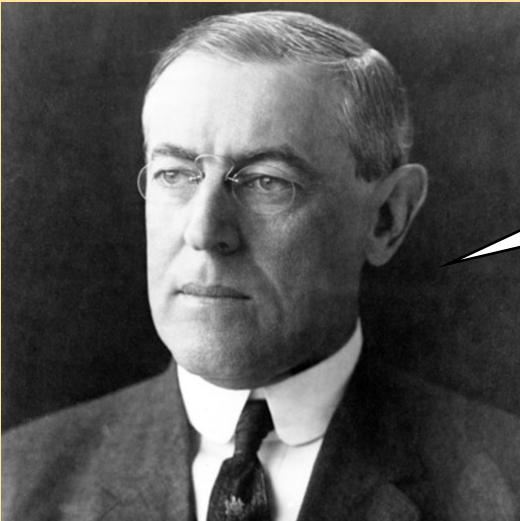
- Be ready for the early start – a dry run never goes amiss
- Have lunch money pre-loaded
- Have equipment ready
- An appropriate school bag
- Take care of valuables – especially mobile phones
- Students will be in their tutor group for the majority of lessons
- They will be walked to and from lessons to start





# Other admin...

- What rewards are there for work in lessons?
- Are there any inter-house competitions?
- Are there any extracurricular activities?
- How do I let you know if my child won't be in?
- Where do they eat their lunch?
- What about mobile phones and social media?





Cycling:

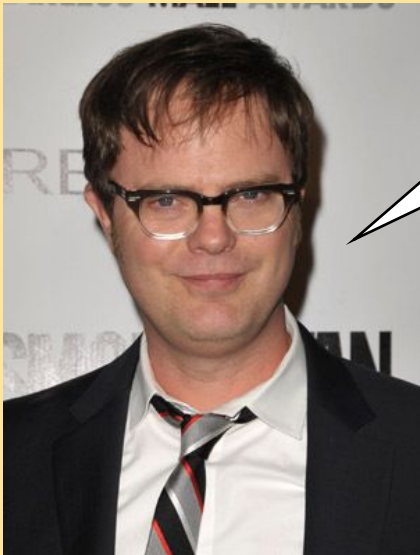
Pupils who wish to cycle to school should complete the Google form (you will be sent this at the start of September). All pupils must wear a suitable cycle helmet to and from school. Cycles can be left in the cycle shed just inside the back school gate, and should be padlocked. The cycle shed is locked at 8.30am until 2.15pm.

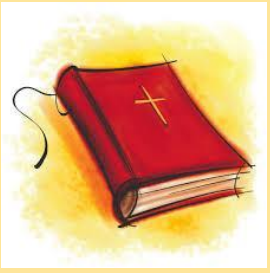
And buses...



# Year 6 'visit'

- Tuesday 4th July – 9am
- There will be a chance for students to meet me / Mrs Copeland / Mrs Stallard /house buddies
- Monday 4<sup>th</sup> September
- Information to follow...





# Settling in...

- Isle of Wight trip 18th - 20th October
- Wine and Cheese Evening - 19th September
- New parents' picnic - 24th September
- Support/the pastoral team/the school counsellor
- The Quiet Place





# Other useful information...

- Transition Tuesdays – also on the school website
- Arbor
- Google Classroom
- School email





# What's special about Wilson?

One of the original four houses





# **What's special about Wilson?**

House Charity – Mombasa Children





# What's special about Wilson?

Inter-house competition





# What's special about Wilson?

Musical





## Year 7 IOW Residential



## Celebration assemblies



## Charity events

## Pilgrimage to Chichester Cathedral

## Trips





# Sports Day





**Mr K Allman (Head of House)**

[allmank@bishopluffa.org.uk](mailto:allmank@bishopluffa.org.uk)

**Mrs A Copeland (Year 7 tutor)**

[copelanda@bishopluffa.org.uk](mailto:copelanda@bishopluffa.org.uk)

**Tel: 01243 787741**