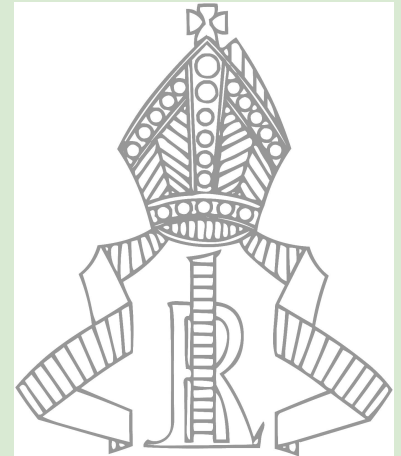




This term's plans...

- Destinations Morning - 6th October
- **Y11 Mock Exams week - Monday 30th October - Friday 3rd November**
- Mock results assembly - 20th November
- Careers Fair - 22nd November
- Parents and Carers Consultation Evening - 23rd November
- Sixth Form Taster Day - 8th December
- Action Plans will be produced and issued 15th December

Be prepared!

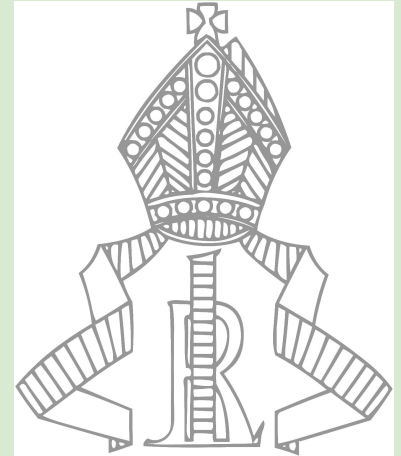


What can I do as a parent?

- Be inquisitive
- Be persistent
- Be interested
- Give them the skills/resources to learn

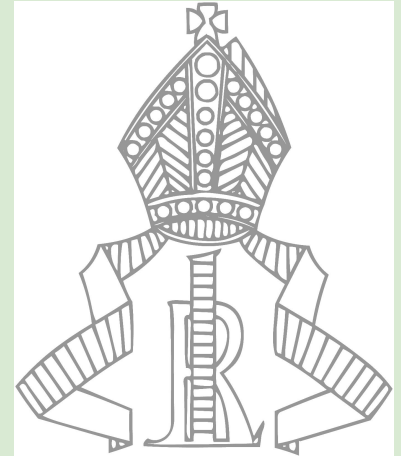


It's your turn to ask 'why' a lot!

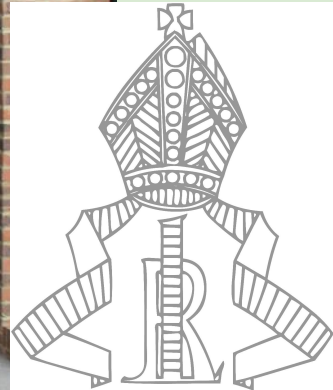




***Success comes from
working together***



You did it!





YEAR 11 GCSE SUPPORT

Mathematics

HEAD OF MATHS
MRS KETTLE
KETTLEH@BISHOPLUFFA.ORG.UK



COMPULSORY WEEKLY TASKS

- **SPARX HOMEWORK (45MINS - 1HR)**
- **HALF PAST PAPER (45MINS - 1HR)**

BOTH SET AND DUE ON WEDNESDAYS



① Homework Task 1

A B C

② Homework Task 2

A B C

③ Homework Task 3

A B C 3

④ Homework Task 4

A 2 B C 2

< Previous **Compulsory Homework Task 4 - Item C** Next >

⌚ Time on Item C: 1 min [Watch video](#)

Attempt 2 ✓ Bookwork code: R96

⌚ 9 seconds 7 days ago [Leave us feedback](#)

A savings account gathers **compound interest** at a rate of 4% per annum. The amount of money in the account over the next two years is shown below.

Copy and complete the expression below for the amount of money in the account after n years.

Start	£500.00
After 1 year	£520.00
After n years	£540.80

£ × ^{n}

500×1.04^n

Student's answer: £ 500

Sparx Maths

- Set every Weds, due the following Weds.
- Support in M8 and M2 every single lunchtime with 4/5 Maths teachers on hand.
- We currently rank 20th of 2000 Sparx Schools for completion each week.



Half Past Paper

- Set every Weds, due the following Weds.
- Students should have a go, then use the video (QR Code linked) to green pen
- They have the mark scheme linked also.
- I do the paper LIVE on TikTok from 7-7:45 (F) and 7:45-8:30pm each Thursday (@hannahkettlemaths)

YouTube

Search

You must write down all the stages in your working

2 Expand and simplify $5(p+3) - 2(1-2p)$

$$\underline{5p} + \underline{15} - \underline{2} + \underline{4p}$$

$$= \underline{9p + 13}$$

Half Past Paper - Week 6 - Higher Edexcel GCSE Maths - Maths Revision

HannahKettleMaths 12.4K subscribers

Pearson Edexcel
Level 1/Level 2 GCSE (9-1)

Mathematics



FOR FULL VIDEO SOLUTIONS
SCAN THE QR CODE
[youtube.com/channel/UCkwanhkeffleu0mths](https://www.youtube.com/channel/UCkwanhkeffleu0mths)



Higher Tier

Half Past Paper – Week 6

Total Marks

Q	Topic		Sparx Code
2	Expanding single brackets	2	U179
4	Tree diagrams for independent events	2	U558
6a	Probabilities of mutually exclusive events	4	U683
6b	Writing probabilities as fractions, decimals and percentages	1	U510
8	Angles in polygons	5	U427
10	Finding the lowest common multiple	3	U751
12a	Finding equations of linear real-life graphs	2	U862
12b	Finding equations of linear real-life graphs	1	U862
12c	Finding equations of linear real-life graphs	1	U862
14	Using the product rule for counting	2	U369
16a	Quadratic sequences, Simultaneous equations involving quadratics	4	U206,U547
16b	Position-to-term rules for quadratic sequences	2	U206
18a	Substituting, Finding approximate solutions to equations using iteration	2	U585,U168
18b	Finding approximate solutions to equations using iteration	1	U168
18c	Finding approximate solutions to equations using iteration	3	U168
20	Venn diagrams	5	U476
	Total	40	

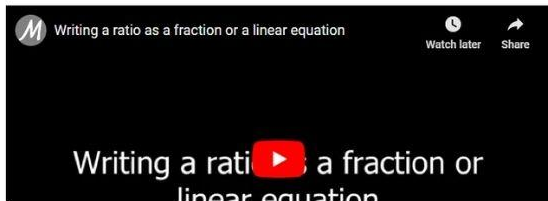
How to revise for Maths?

Averages from Frequency Tables	Exam Questions		
Probability	Exam Questions	Probability and Relative Frequency	Solutions
Scatter Graphs		Scatter Graphs	Solutions

Grade 5

Videos	Exam Questions	Exam Questions Booklet	Solutions
Writing a Ratio as a Fraction or Linear Function	Exam Questions Exam Questions	Ratio Fraction Problems Ratio Problems 2	Solutions Solutions
Direct and Inverse Proportion	Exam Questions	Direct and Inverse Proportion	Solutions
Reverse Percentages	Exam Questions	Reverse Percentages	Solutions
Standard Form	Exam Questions	Standard Form	Solutions
Speed and Density	Exam Questions	Compound Measures	Solutions
Changing the Subject of a Formula	Exam Questions	Changing the Subject of a Formula	Solutions
Expanding and Factorising Quadratics	Exam Questions	Expanding and Factorising Quadratics	Solutions
Solving Quadratics	Exam Questions	Solving Quadratics	Solutions

Writing a Ratio as a Fraction or a Linear Function



Mathsgenie.co.uk	Please do not write on this sheet	Mathsgenie.co.uk
<p>1 In a bag there are blue sweets and red sweets. The ratio of blue sweets to red sweets is 5:3 What fraction of the sweets are blue? (2 marks)</p> <hr/> <p>2 In a bag there are blue sweets and red sweets. The ratio of blue sweets to red sweets is 2:7 What fraction of the sweets are red? (2 marks)</p> <hr/> <p>3 In a bag there are blue sweets and red sweets. The ratio of blue sweets to red sweets is 4:9 What fraction of the sweets are blue? (2 marks)</p>	<p>7 In a bag there are only red sweets and yellow sweets. $\frac{2}{3}$ of the sweets are red. Write down the ratio of red sweets to yellow sweets? (2 marks)</p> <hr/> <p>8 In a bag there are only red sweets and yellow sweets. $\frac{3}{5}$ of the sweets are red. Write down the ratio of red sweets to yellow sweets? (2 marks)</p> <hr/> <p>9 In a bag there are only blue sweets and green sweets. $\frac{5}{6}$ of the sweets are green. Write down the ratio of blue sweets to green sweets? (2 marks)</p> <hr/> <p>10 An artist is making orange paint by mixing red paint (x ml) and yellow paint</p>	

[Scatter Graphs](#)

[Solutions](#)

Grade 5

Videos	Exam Questions	Exam Questions Booklet	Solutions
Writing a Ratio as a Fraction or Linear Function	Exam Questions	Ratio Fraction Problems	Solutions
	Exam Questions	Ratio Problems 2	Solutions
Direct and Inverse Proportion	Exam Questions	Direct and Inverse Proportion	Solutions
Reverse Percentages	Exam Questions	Reverse Percentages	Solutions
Standard Form	Exam Questions	Standard Form	Solutions
Speed and Density	Exam Questions	Compound Measures	Solutions
Changing the Subject of a Formula	Exam Questions	Changing the Subject of a Formula	Solutions
Expanding and Factorising Quadratics	Exam Questions	Expanding and Factorising Quadratics	Solutions
Solving Quadratics	Exam Questions	Solving Quadratics	Solutions



Compulsory



XP Boost



Target



Independent Learning

Independent Learning

Find topics

My activity

Search for topics:

Your curriculum:

GCSE

Default level:

Level 3

Select a topic:

Number



Algebra



Ratio and Proportion



Geometry



Probability



Statistics





@1STCLASSMATHS

@THEGCSEMATHSTUTOR



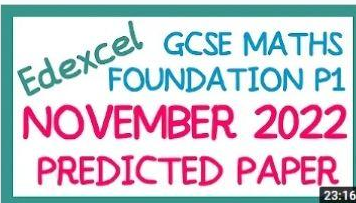
EDEXCEL GCSE Maths November 2022 Predicted Foundation Paper 2

32 views · 18 hours ago

1st Class Maths

Paper download: https://www.1stclassmaths.com/_files/ugd/9f3fb0_bfb2b57955cd4f4381d3188b123870b0.pdf This paper has ...

New



EDEXCEL GCSE Maths November 2022 Predicted Foundation Paper 1

62 views · 23 hours ago

1st Class Maths

Paper download: https://www.1stclassmaths.com/_files/ugd/9f3fb0_ee9c9e432d574b43a2bc0d4060e95e76.pdf This paper has ...

New

Introduction | Q1 – Convert decimal to fraction | Q2 – Positive Integer Powers | Q3 – Order of... 27 chapters

GCSE MATHS TUTOR

THE WHOLE GCSE IN 2 HOURS

Like PASS YOUR GCSE

2:29:58

Everything You Need To Pass Your GCSE Maths Exam! Higher & Foundation Revision | Edexcel AQA & OCR

951K views · 2 years ago

The GCSE Maths Tutor

A video revising the techniques and strategies for all of the fundamental topics that you need to achieve a grade 5 and above in ...

Introduction | Product of Prime Factors | Lowest Common Multiple | Highest Common Factor | ... 69 chapters

GCSE MATHS TUTOR

THE WHOLE GCSE IN 2 HOURS

Like GETTING A GRADE 6-9
IN YOUR MATHS GCSE

2:54:48

Everything for a Grade 6-9 in your GCSE Maths Exam! Higher Maths Exam Revision | Edexcel AQA & OCR

536K views · 2 years ago

The GCSE Maths Tutor

A video revising the techniques and strategies for all of the higher only topics that you need to achieve a grade 6-9 in GCSE maths ...

Intro | Negative and Fractional Indices | Upper and Lower Bound Calculations | Recurring Decimals | ... 49 chapters

English - Supporting your child

Head of English

Mr Collins

Collinss@bishopluffa.org.uk

Centre number	<input type="text"/>	Candidate number	<input type="text"/>
Surname	<input type="text"/>		
Forename(s)	<input type="text"/>		
Candidate signature	<input type="text"/>		
I declare this is my own work.			

GCSE ENGLISH LANGUAGE

Paper 1 Explorations in creative reading and writing

Time allowed: 1 hour 45 minutes

Materials

For this paper you must have:

- **Source A** – provided as a separate insert.

Instructions

- Answer **all** questions.
- Use black ink or black ball-point pen.
- Fill in the boxes at the top of this page.
- You must answer the questions in the spaces provided.
- Do not write outside the box around each page or on blank pages.
- If you need extra space for your answer(s), use the lined pages at the end of this book. Write the question number against your answer(s).
- Do all rough work in this book. Cross through any work you do not want to be marked.
- You must refer to the insert booklet provided.
- You must **not** use a dictionary.

Information

- The marks for questions are shown in brackets.
- The maximum mark for this paper is 80.
- There are 40 marks for **Section A** and 40 marks for **Section B**.
- You are reminded of the need for good English and clear presentation in your answers.
- You will be assessed on the quality of your **reading** in **Section A**.
- You will be assessed on the quality of your **writing** in **Section B**.

Advice

- You are advised to spend about 15 minutes reading through the source and all five questions you have

For Examiner's Use	
Question	Mark
1	
2	
3	
4	
5	
TOTAL	



GCSE ENGLISH LITERATURE

Paper 1 Shakespeare and the 19th-century novel

Wednesday 15 May 2019 Afternoon Time allowed: 1 hour 45 minutes

Materials

For this paper you must have:

- an AQA 16-page answer book.

Instructions

- Use black ink or black ball-point pen. Do **not** use pencil.
- Write the information required on the front of your answer book. The **Paper Reference** is 8702/1.
- Answer **one** question from **Section A** and **one** question from **Section B**.
- You must **not** use a dictionary.

Information

- The marks for questions are shown in brackets.
- The maximum mark for this paper is 64.
- AQ4 will be assessed in **Section A**. There are 4 marks available for AQ4 in **Section A** in addition to 30 marks for answering the question. AQ4 assesses the following skills: use a range of vocabulary and sentence structures for clarity, purpose and effect, with accurate spelling and punctuation.
- There are 30 marks for **Section B**.

Weekly homework tasks

● Half a past paper each week:

● English Language – two papers

● English Literature – two papers

Centre number	<input type="text"/>	<input type="text"/>	<input type="text"/>	<input type="text"/>	<input type="text"/>	<input type="text"/>	Candidate number	<input type="text"/>	<input type="text"/>	<input type="text"/>	<input type="text"/>	<input type="text"/>
Surname	<input type="text"/>											
Forename(s)	<input type="text"/>											
Candidate signature	<input type="text"/>											
I declare this is my own work.												

GCSE ENGLISH LANGUAGE

Paper 1 Explorations in creative reading and writing

Time allowed: 1 hour 45 minutes

Materials

For this paper you must have:

- **Source A** – provided as a separate insert.

Instructions

- Answer all questions.
- Use black ink or black ball-point pen.
- Fill in the boxes at the top of this page.
- You must answer the questions in the spaces provided.
- Do not write outside the box around each page or on blank pages.
- If you need extra space for your answer(s), use the lined pages at the end of this book. Write the question number against your answer(s).
- Do all rough work in this book. Cross through any work you do not want to be marked.
- You must refer to the insert booklet provided.
- You must **not** use a dictionary.

Information

- The marks for questions are shown in brackets.
- The maximum mark for this paper is 60.
- There are 40 marks for **Section A** and 40 marks for **Section B**.
- You are reminded of the need for good English and clear presentation in your answers.
- You will be assessed on the quality of your **reading** in **Section A**.
- You will be assessed on the quality of your **writing** in **Section B**.

Advice

- You are advised to spend about 15 minutes reading through the source and all five questions you have

For Examiner's Use	
Question	Mark
1	
2	
3	
4	
5	
TOTAL	

AQA

GCSE ENGLISH LITERATURE

Paper 1 Shakespeare and the 19th-century novel

Wednesday 15 May 2019 Afternoon Time allowed: 1 hour 45 minutes

Materials

For this paper you must have:

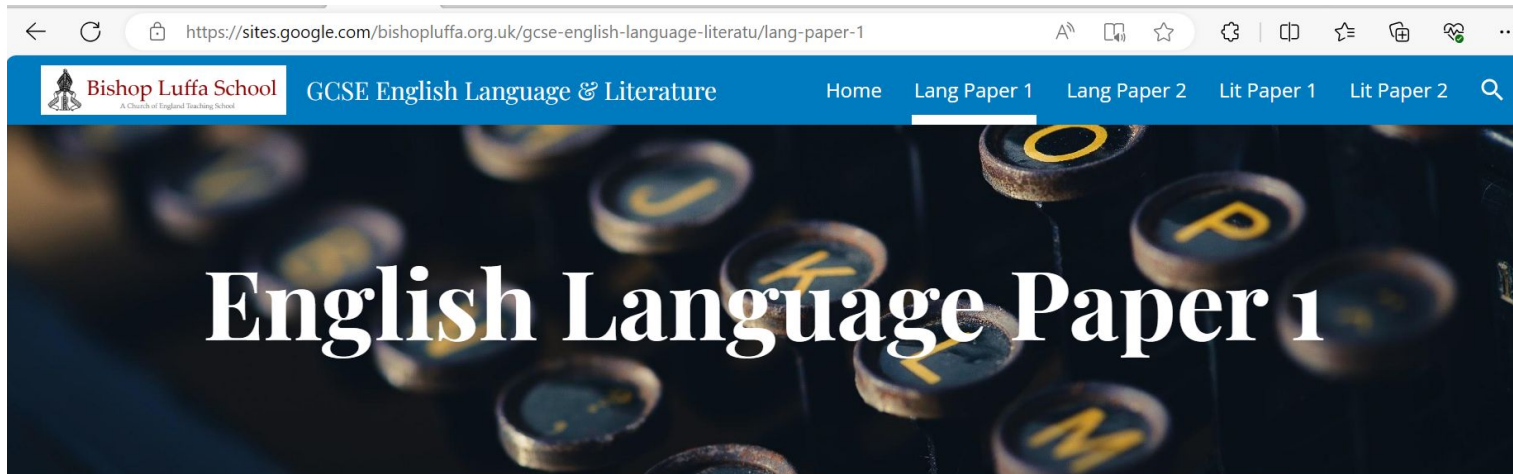
- an AQA 16-page answer book.

Instructions

- Use black ink or black ball-point pen. Do **not** use pencil.
- Write the information required on the front of your answer book. The **Paper Reference** is 8702/1.
- Answer **one** question from **Section A** and **one** question from **Section B**.
- You must **not** use a dictionary.

Information

- The marks for questions are shown in brackets.
- The maximum mark for this paper is 64.
- AQA will be assessed in **Section A**. There are 4 marks available for AQA in **Section A** in addition to 30 marks for answering the question. AQA assesses the following skills: use a range of vocabulary and sentence structures for clarity, purpose and effect, with accurate spelling and punctuation.
- There are 30 marks for **Section B**.



What to expect

Paper 1: Explorations in Creative Reading and Writing

Monday, 30th October pm. 1 hour, 45
minutes

What to expect

Tip: the extract is from an unseen text. Remind your child to read some modern fiction and create their own P1-style questions about the texts they read, and then answer them.

Centre number	<input type="text"/>	Candidate number	<input type="text"/>
Surname	<input type="text"/>		
Forename(s)	<input type="text"/>		
Candidate signature	<input type="text"/>		
I declare this is my own work.			

GCSE ENGLISH LANGUAGE

Paper 1 Explorations in creative reading and writing

Time allowed: 1 hour 45 minutes

Materials

For this paper you must have:

- **Source A** – provided as a separate insert.

Instructions

- Answer **all** questions.
- Use black ink or black ball-point pen.
- Fill in the boxes at the top of this page.
- You must answer the questions in the spaces provided.
- Do not write outside the box around each page or on blank pages.
- If you need extra space for your answer(s), use the lined pages at the end of this book. Write the question number against your answer(s).
- Do all rough work in this book. Cross through any work you do not want to be marked.
- You must refer to the insert booklet provided.
- You must **not** use a dictionary.

Information

- The marks for questions are shown in brackets.
- The maximum mark for this paper is 80.
- There are 40 marks for **Section A** and 40 marks for **Section B**.
- You are reminded of the need for good English and clear presentation in your answers.
- You will be assessed on the quality of your **reading** in **Section A**.
- You will be assessed on the quality of your **writing** in **Section B**.

Advice

- You are advised to spend about 15 minutes reading through the source and all five questions you have

For Examiner's Use	
Question	Mark
1	
2	
3	
4	
5	
TOTAL	



GCSE ENGLISH LANGUAGE

Paper 1 Explorations in creative reading and writing

Insert

The source that follows is:

Source A: 21st Century prose fiction

Half of a Yellow Sun by Chimamanda Ngozi Adichie

An extract from the beginning of a novel published in 2006.

Please turn the page over to see the source

What to expect

50% of total

Questions:

Reading (40 marks) (25%) – one single text

- Q1 short question (4 marks)
- Q2 longer question (8 marks)
- Q3 long question (8 marks)
- Q4 extended question (20 marks)

Writing (40 marks) (25%)

- Q5 - an extended writing question (24 marks for content, 16 marks for technical accuracy)

Ways to revise: our website

Past papers

Centre number: _____ Candidate number: _____

Surname: _____

Forename(s): _____

Candidate signature: _____

I declare this is my own work.

GCSE ENGLISH LANGUAGE

Paper 1 Explorations in creative reading and writing

Time allowed: 1 hour 45 minutes

Materials
For this paper you must have:
• Source A – provided as a separate insert.

- Instructions**
- Answer all questions.
 - Use black ink or black ball-point pen.
 - Fill in boxes at the top of this page.
 - You must answer the questions in the spaces provided.
 - Do not write outside the box around each page or on blank pages.
 - If you must write on a page for your answer(s) use the final pages at the end of this book. Write the question number against your answer(s).
 - Do all rough work in this book. Cross through any work you do not want to be marked.
 - You must refer to the insert booklet provided.
 - You must not use a dictionary.

All Candidate's Use	
Question	Mark
1	
2	
3	
4	
5	
TOTAL	

Information

- The marks for questions are shown in brackets.
- The maximum mark for this paper is 60.
- There are 40 marks for Section A and 40 marks for Section B.
- You are reminded of the need for good English and clear presentation in your answers.
- You will be assessed on the quality of your writing in Section A.
- You will be assessed on the quality of your writing in Section B.

Advice

- You are advised to spend about 15 minutes reading through the source and all five questions you have

Mini Mocks

Mini mocks

Paper 1 mini mock: a vendetta

Source A: The opening of a short story called 'A Vendetta' by Guy de Maupassant.

- 1 The widow of Pappo Savarini lived alone with her son in a poor little house on the outskirts of Bordighera. The town, built on an outlying part of the mountain, lay peace even overlooking the sea, looks across the straits, full of sandbanks, towards the southernmost coast of Sardinia. Beneath it, on the other side and almost surrounding it, as well in the off like an immense corridor which serves as a harbor, and along it the little Italian and Sardinian fishing boats come by a circuitous route between precipitous cliffs as far as the first houses, and every two weeks the city, whence sooner which makes the trip to Ajaccio.
- 10 The white mountain houses, massed together, makes an even whiter spot. They look like the nests of vic bars, clinging to this peak, overlooking this terrible passage, where vessels rarely venture. The wind, which blows unmercifully, has swept bare the hedging coast; it blows through the narrow straits and lays waste both sides. The pale streaks of foam, clinging to the black rocks, whose countless peaks rise up out of the water, look like bits of rag floating and sitting on the surface of the sea.
- 15 The house of widow Savarini, clinging to the very edge of the precipice, looks out, through its three windows, over this wild and desolate picture. She lived there alone, with her son Antonio and their dog "Semillante," a big, thin beast, with a long rough coat, of the sheep-dog breed. The young man took her with him when out hunting. One night, after some time of a square, Antonio Savarini was treacherously stabbed by Nicolas Rivalotti, who escaped the same evening to Sardinia.

Youtube

Question 2

AQA English Language Paper 1 Question 2 (2024) @mrbruff

Mr Bruff

AQA ENGLISH LANGUAGE PAPER 1 QUESTION 2



English Literature Paper 1

What to expect

Paper 1: Shakespeare and the 19th-century novel

Wednesday, 1st
November, pm. 1 hour
45 minutes

English - Supporting your child

Head of English

Mr Collins

Collinss@bishopluffa.org.uk

Centre number	<input type="text"/>	Candidate number	<input type="text"/>
Surname	<input type="text"/>		
Forename(s)	<input type="text"/>		
Candidate signature	<input type="text"/>		
I declare this is my own work.			

GCSE ENGLISH LANGUAGE

Paper 1 Explorations in creative reading and writing

Time allowed: 1 hour 45 minutes

Materials

For this paper you must have:

- **Source A** – provided as a separate insert.

Instructions

- Answer **all** questions.
- Use black ink or black ball-point pen.
- Fill in the boxes at the top of this page.
- You must answer the questions in the spaces provided.
- Do not write outside the box around each page or on blank pages.
- If you need extra space for your answer(s), use the lined pages at the end of this book. Write the question number against your answer(s).
- Do all rough work in this book. Cross through any work you do not want to be marked.
- You must refer to the insert booklet provided.
- You must **not** use a dictionary.

Information

- The marks for questions are shown in brackets.
- The maximum mark for this paper is 80.
- There are 40 marks for **Section A** and 40 marks for **Section B**.
- You are reminded of the need for good English and clear presentation in your answers.
- You will be assessed on the quality of your **reading** in **Section A**.
- You will be assessed on the quality of your **writing** in **Section B**.

Advice

- You are advised to spend about 15 minutes reading through the source and all five questions you have

For Examiner's Use	
Question	Mark
1	
2	
3	
4	
5	
TOTAL	

GCSE ENGLISH LITERATURE

Paper 1 Shakespeare and the 19th-century novel

Wednesday 15 May 2019 Afternoon Time allowed: 1 hour 45 minutes

Materials

For this paper you must have:

- an AQA 16-page answer book.

Instructions

- Use black ink or black ball-point pen. Do **not** use pencil.
- Write the information required on the front of your answer book. The **Paper Reference** is 8702/1.
- Answer **one** question from **Section A** and **one** question from **Section B**.
- You must **not** use a dictionary.

Information

- The marks for questions are shown in brackets.
- The maximum mark for this paper is 64.
- AQ4 will be assessed in **Section A**. There are 4 marks available for AQ4 in **Section A** in addition to 30 marks for answering the question. AQ4 assesses the following skills: use a range of vocabulary and sentence structures for clarity, purpose and effect, with accurate spelling and punctuation.
- There are 30 marks for **Section B**.

Weekly homework tasks

● Half a past paper each week:

● English Language – two papers

● English Literature – two papers

Centre number	<input type="text"/>	Candidate number	<input type="text"/>
Surname	<input type="text"/>		
Forename(s)	<input type="text"/>		
Candidate signature	<input type="text"/>		
I declare this is my own work.			

GCSE ENGLISH LANGUAGE

Paper 1 Explorations in creative reading and writing

Time allowed: 1 hour 45 minutes

Materials

For this paper you must have:

- **Source A** – provided as a separate insert.

Instructions

- Answer all questions.
- Use black ink or black ball-point pen.
- Fill in the boxes at the top of this page.
- You must answer the questions in the spaces provided.
- Do not write outside the box around each page or on blank pages.
- If you need extra space for your answer(s), use the lined pages at the end of this book. Write the question number against your answer(s).
- Do all rough work in this book. Cross through any work you do not want to be marked.
- You must refer to the insert booklet provided.
- You must **not** use a dictionary.

Information

- The marks for questions are shown in brackets.
- The maximum mark for this paper is 60.
- There are 40 marks for **Section A** and 40 marks for **Section B**.
- You are reminded of the need for good English and clear presentation in your answers.
- You will be assessed on the quality of your **reading** in **Section A**.
- You will be assessed on the quality of your **writing** in **Section B**.

Advice

- You are advised to spend about 15 minutes reading through the source and all five questions you have

For Examiner's Use	
Question	Mark
1	
2	
3	
4	
5	
TOTAL	

AQA

GCSE ENGLISH LITERATURE

Paper 1 Shakespeare and the 19th-century novel

Wednesday 15 May 2019 Afternoon Time allowed: 1 hour 45 minutes

Materials

For this paper you must have:

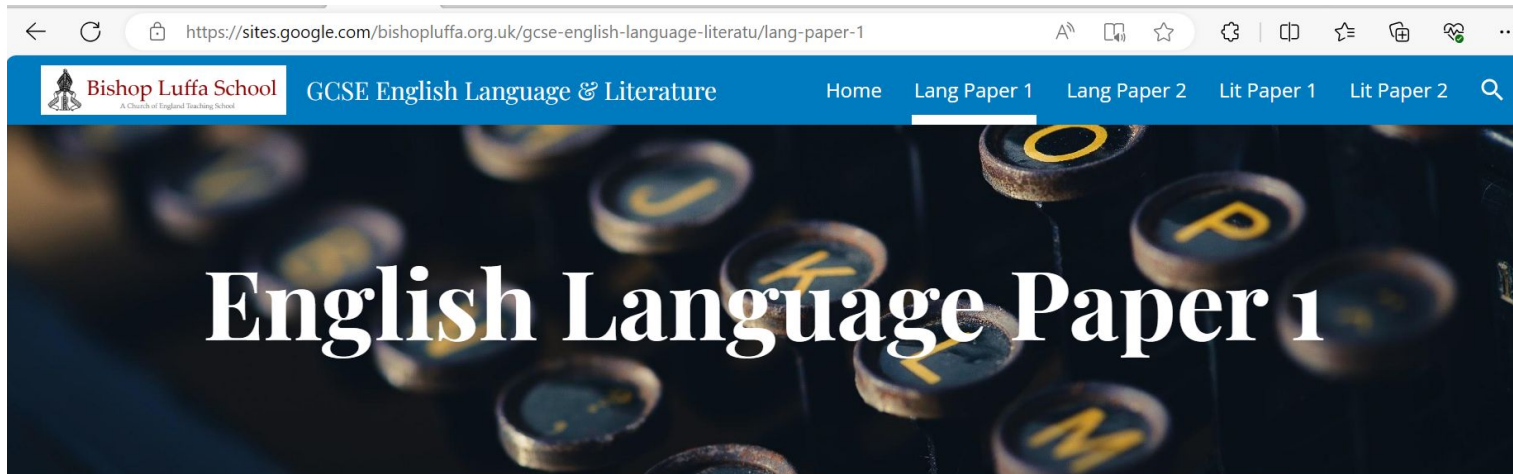
- an AQA 16-page answer book.

Instructions

- Use black ink or black ball-point pen. Do **not** use pencil.
- Write the information required on the front of your answer book. The **Paper Reference** is 8702/1.
- Answer **one** question from **Section A** and **one** question from **Section B**.
- You must **not** use a dictionary.

Information

- The marks for questions are shown in brackets.
- The maximum mark for this paper is 64.
- AQA will be assessed in **Section A**. There are 4 marks available for AQA in **Section A** in addition to 30 marks for answering the question. AQA assesses the following skills: use a range of vocabulary and sentence structures for clarity, purpose and effect, with accurate spelling and punctuation.
- There are 30 marks for **Section B**.



What to expect

Paper 1: Explorations in Creative Reading and Writing

Monday, 30th October pm. 1 hour, 45
minutes

What to expect

Tip: the extract is from an unseen text. Remind your child to read some modern fiction and create their own P1-style questions about the texts they read, and then answer them.

Centre number	<input type="text"/>	Candidate number	<input type="text"/>
Surname	<input type="text"/>		
Forename(s)	<input type="text"/>		
Candidate signature	<input type="text"/>		
I declare this is my own work.			

GCSE ENGLISH LANGUAGE

Paper 1 Explorations in creative reading and writing

Time allowed: 1 hour 45 minutes

Materials

For this paper you must have:

- **Source A** – provided as a separate insert.

Instructions

- Answer **all** questions.
- Use black ink or black ball-point pen.
- Fill in the boxes at the top of this page.
- You must answer the questions in the spaces provided.
- Do not write outside the box around each page or on blank pages.
- If you need extra space for your answer(s), use the lined pages at the end of this book. Write the question number against your answer(s).
- Do all rough work in this book. Cross through any work you do not want to be marked.
- You must refer to the insert booklet provided.
- You must **not** use a dictionary.

Information

- The marks for questions are shown in brackets.
- The maximum mark for this paper is 80.
- There are 40 marks for **Section A** and 40 marks for **Section B**.
- You are reminded of the need for good English and clear presentation in your answers.
- You will be assessed on the quality of your **reading** in **Section A**.
- You will be assessed on the quality of your **writing** in **Section B**.

Advice

- You are advised to spend about 15 minutes reading through the source and all five questions you have

For Examiner's Use	
Question	Mark
1	
2	
3	
4	
5	
TOTAL	



GCSE ENGLISH LANGUAGE

Paper 1 Explorations in creative reading and writing

Insert

The source that follows is:

Source A: 21st Century prose fiction

Half of a Yellow Sun by Chimamanda Ngozi Adichie

An extract from the beginning of a novel published in 2006.

Please turn the page over to see the source

What to expect

50% of total

Questions:

Reading (40 marks) (25%) – one single text

- Q1 short question (4 marks)
- Q2 longer question (8 marks)
- Q3 long question (8 marks)
- Q4 extended question (20 marks)

Writing (40 marks) (25%)

- Q5 - an extended writing question (24 marks for content, 16 marks for technical accuracy)

Ways to revise: our website

Past papers

Centre number _____ Candidate number _____

Surname _____

Forename(s) _____

Candidate signature _____

I declare this is my own work.

GCSE ENGLISH LANGUAGE

Paper 1 Explorations in creative reading and writing

Time allowed: 1 hour 45 minutes

Materials

For this paper you must have:

- Source A – provided as a separate insert.

Instructions

- Answer all questions.
- Use black ink or black ball-point pen.
- Fill in boxes at the top of this page.
- Do not write outside the box around each page or on blank pages.
- If you must answer the questions in the spaces provided.
- If you must write your answers on the final pages at the end of this book, write the question number against your answer(s).
- Do all rough work in the book. Cross through any work you do not want to be marked.
- You must refer to the insert booklet provided.
- You must not use a dictionary.

Information

- The marks for questions are shown in brackets.
- The maximum mark for this paper is 60.
- There are 40 marks for Section A and 40 marks for Section B.
- You are reminded of the need for good English and clear presentation in your answers.
- You will be assessed on the quality of your writing in Section A.
- You will be assessed on the quality of your writing in Section B.

Advice

- You are advised to spend about 15 minutes reading through the source and all five questions you have

All Candidate's Use	
Question	Mark
1	
2	
3	
4	
5	
TOTAL	

Mini Mocks

Mini mocks

Paper 1 mini mock: a vendetta

Source A: The opening of a short story called 'A Vendetta' by Guy de Maupassant.

- 1 The widow of Pappo Savarini lived alone with her son in a poor little house on the outskirts of Bordighera. The town, built on an outlying part of the mountain, lay peace even overlooking the sea, looks across the straits, full of sandbanks, towards the southernmost coast of Sardinia. Beneath it, on the other side and almost surrounding it, as well in the off like an immense corridor which serves as a harbor, and along it the little Italian and Sardinian fishing boats come by a circuitous route between precipitous cliffs as far as the first houses, and every two weeks the city, whence sooner which makes the trip to Ajaccio.
- 10 The white mountain houses, massed together, makes an even whiter spot. They look like the nests of vic birds, clinging to this peak, overlooking this terrible passage, where vessels rarely venture. The wind, which blows unmercifully, has swept bare the hedging coast; it blows through the narrow straits and lays waste both sides. The pale streaks of foam, clinging to the black rocks, whose countless peaks rise up out of the water, look like bits of rag floating and sitting on the surface of the sea.
- 15 The house of widow Savarini, clinging to the very edge of the precipice, looks out, through its three windows, over this wild and desolate picture. She lived there alone, with her son Antonio and their dog "Semillante," a big, thin beast, with a long rough coat, of the sheep-dog breed. The young man took her with him when out hunting. One night, after some time of a square, Antonio Savarini was treacherously stabbed by Nicolas Rivalotti, who escaped the same evening to Sardinia.

Youtube

Question 2

AQA English Language Paper 1 Question 2 (2024) @mrbruff

Mr Bruff

AQA ENGLISH LANGUAGE PAPER 1 QUESTION 2



English Literature Paper 1

What to expect

Paper 1: Shakespeare and the 19th-century novel

Wednesday, 1st
November, pm. 1 hour
45 minutes

Ways to revise – read exemplars

An example 30 mark 'Macbeth' response is below - enjoy!

Shakespeare presents Macbeth in this extract as violent. Yet his violent actions are applauded by others and they are seen to be a sign of Macbeth's bravery. This extract also establishes one of the main themes of the play; masculinity being linked to violence. The extract also foreshadows the ending of the play and Macbeth's downfall.

Shakespeare presents Macbeth as violent through use of language, "he unseamed him from the nave to th'chaps". The word "unseamed" has particularly gruesome connotations. It suggests Macbeth is taking apart Macdonald. It has a finality. This emphasises to the audience what Macbeth is doing, he is taking a life. This could be hinting at the gravity of killing, suggesting that violence should not be excessive. Macbeth's violence by the end of the play of course becomes excessive.

The line, "fixed his head upon our battlements" is significant because this is ultimately what happens to Macbeth at the end of the play. The use of the cyclical structure could be reflective of how violence leads to a cycle of destruction. It could also reflect how violence will lead to Macbeth's downfall.


However Shakespeare also presents Macbeth as a brave and noble character whose violent deeds contribute to his bravery. The captain's speech sounds like an epic tale and it vividly brings alive Macbeth's bravery. The quote, "brave Macbeth – well he deserves that name," is significant. It suggests that masculinity is linked to violence and bravery throughout the play violence and masculinity are linked. Lady Macbeth calls on spirits to "unsex me" and make her masculine as she believes this will enable her to commit violent act. Macbeth himself is manipulated into killing Duncan by Lady Macbeth when she insults his manhood. This links masculinity and violence. Shakespeare could be critiquing this idea of toxic masculinity through Macbeth.

The quote "brave Macbeth" is also significant because it shows that Macbeth is most comfortable on one battlefield. When he is using violence on the battlefield he doesn't have to question the morality of his actions. We see this at the end of the play when Macbeth despite knowing he is doomed fights bravely against Macduff. He returns briefly to the brave warrior seen at the beginning of the play.

Ways to revise

- Flash cards
- <https://flipsocards.com/product/macbeth-revision-cards/>


ACT ONE SUMMARY



The play begins with three Weird Sisters on a heath, discussing when they plan to meet Macbeth. A bleeding sergeant informs King Duncan of Macbeth's bravery on the battlefield, helping Scotland win the battle against Norway.

After hearing of the betrayal of the Thane of Cawdor, Duncan has him executed and tells Ross to give his former title to Macbeth. Close to the battleground, the Weird Sisters greet Macbeth and Banquo, telling the former he will become Thane of Cawdor and later King, and the latter, that he will beget kings. The Weird Sisters then vanish into thin air.

Shortly after meeting the Weird Sisters, the first part of the prophecy comes true: Macbeth is greeted by the king's men and is presented with the title, Thane of Cawdor. He is shocked and writes to his wife. After receiving the news and finding out Duncan is to stay at their castle, Lady Macbeth immediately plots to kill him. Macbeth isn't sure, but by the end of the act, he is determined to go ahead with the murder.



©FlipsCo Cards

Ways to revise - A night out!

Head of English
Mr Collins
Collinss@bishopluffa.org.uk



AN ETT, NORTHERN STAGE, SHAKESPEARE NORTH PLAYHOUSE & THÉÂTRES DE LA VILLE DE LUXEMBOURG PRODUCTION.

Macbeth

BY WILLIAM SHAKESPEARE
20 FEB 2024 - 24 FEB 2024

A visceral and contemporary new production by English Touring Theatre and Directed by Richard Twyman based on the classic play by William Shakespeare.

Pri
Amaz
Advar
Ticket
Conci



ETT in association with Bristol Old Vic

Macbeth

Date: Tuesday 5th March 2024

Time: See below

Location: Connaught Theatre

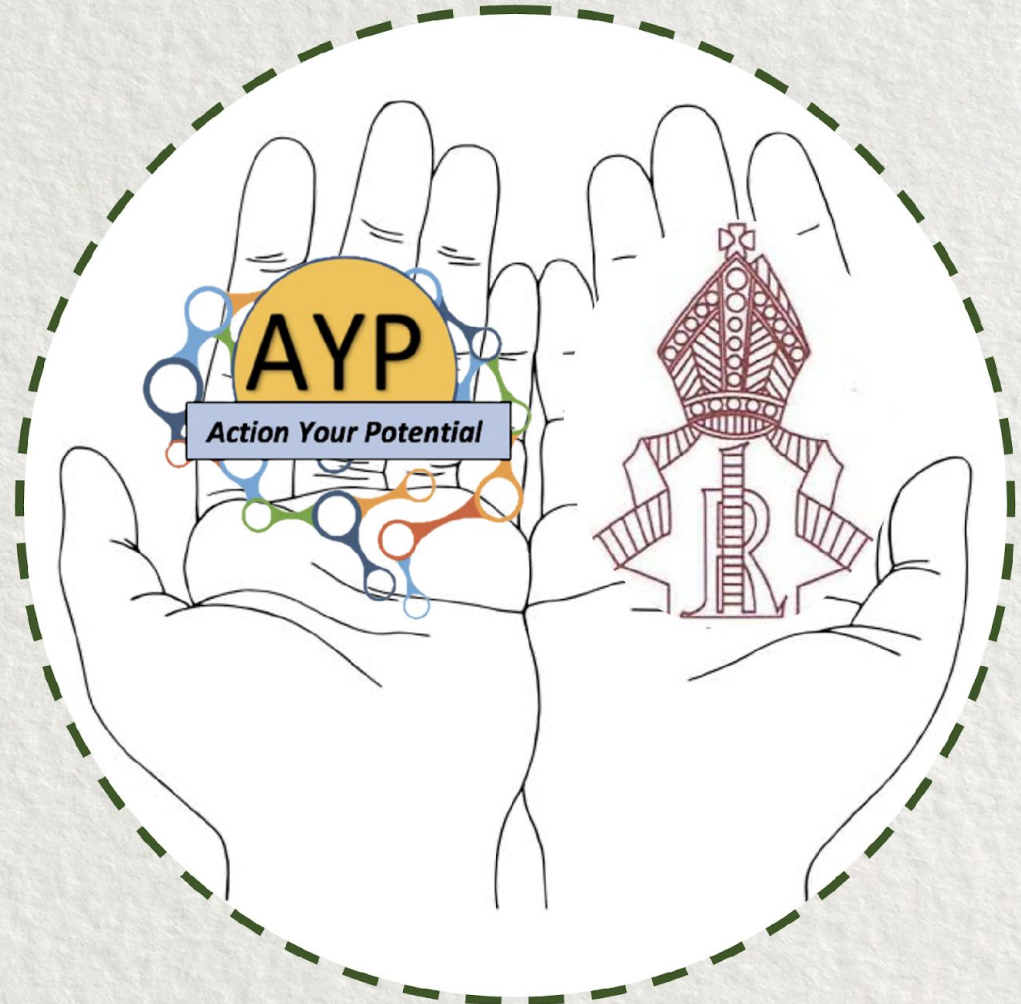
Tickets: From £16.00

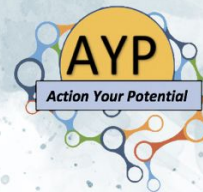
Age Guidance: Suitable for ages 12+

Duration: 150 minutes

Book Now

AYP support for
Bishop Luffa School
students, parents &
carers...





We're here to help you be the
best you can be...

Become a #NeuroNinja this year &
change your world

Strand 1 - Well-being is a skill



Skill 1 - Do Your Rocks

Skill 2 - ...

Strand 3 - Unleashing learning

- Skill 7 - Do your leaps
- Skill 8 - Practice makes progress
- Skill 9 - Little & often learning
- Skill 10 - Plan your learning and day



Strand 2 - Mind Management

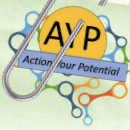


- Skill 3 - Manage worries
- Skill 4 - Build your calm
- Skill 5 - Choose Growth



Strand 4 - Managing Relationships and Behaviour

- Skill 11 - Build Value and Values
- Skill 12 - Build Empathy For Self & Others
- Skill 13 - Build Positive Connections
- Skill 14 - Respond Not React



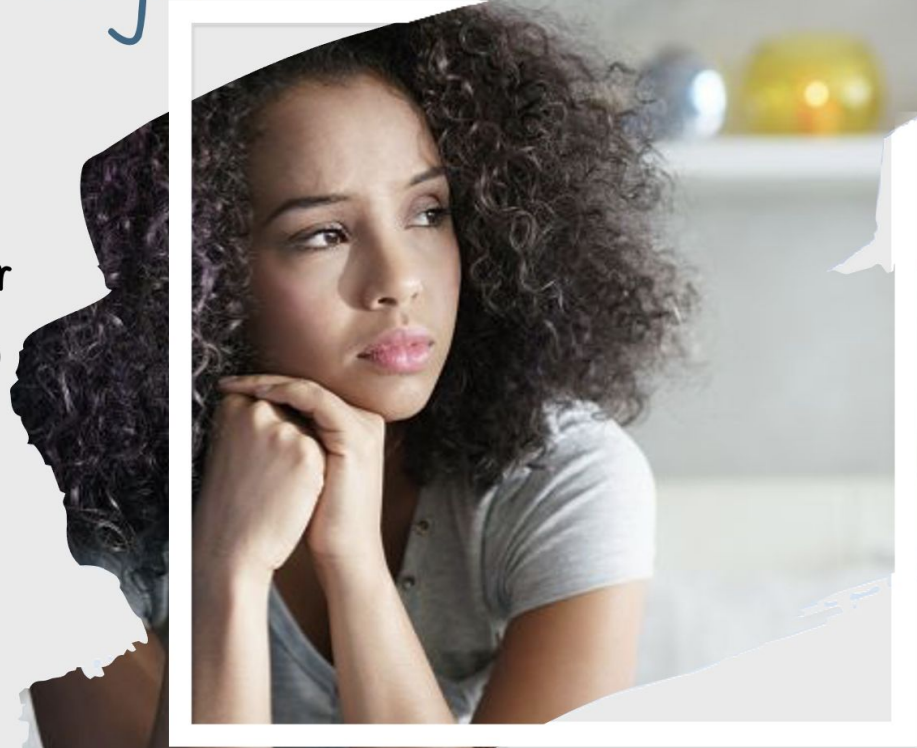


Our mission: To develop insight...



The capacity to gain an accurate and deep understanding of ourselves, our motivations, our emotions, our needs, our behaviours and how to learn, grow and improve in perpetuity.

These are metacognitive skills that transform outcomes.



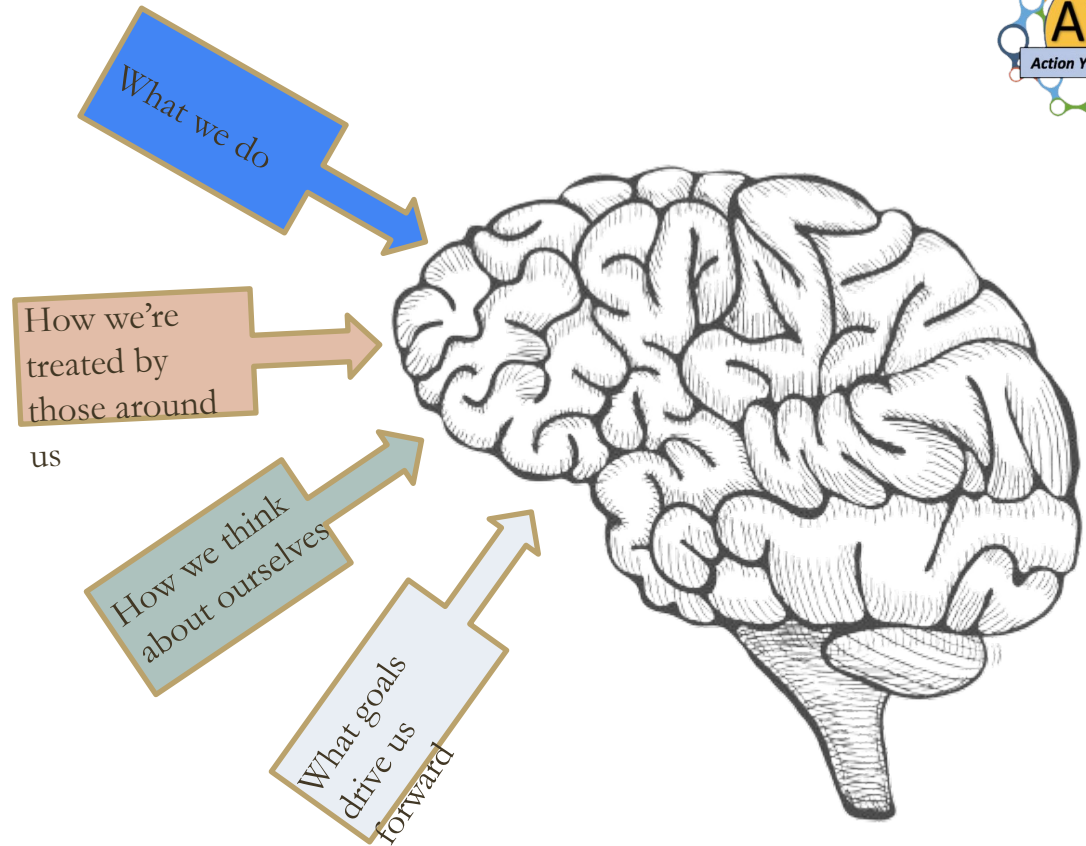


Change Your Brain
Change Your Mind
Change Your World



We sculpt the prefrontal cortex of our brains, building models of feeling, thinking and behaviours to respond to the world...

We do that on the basis of...

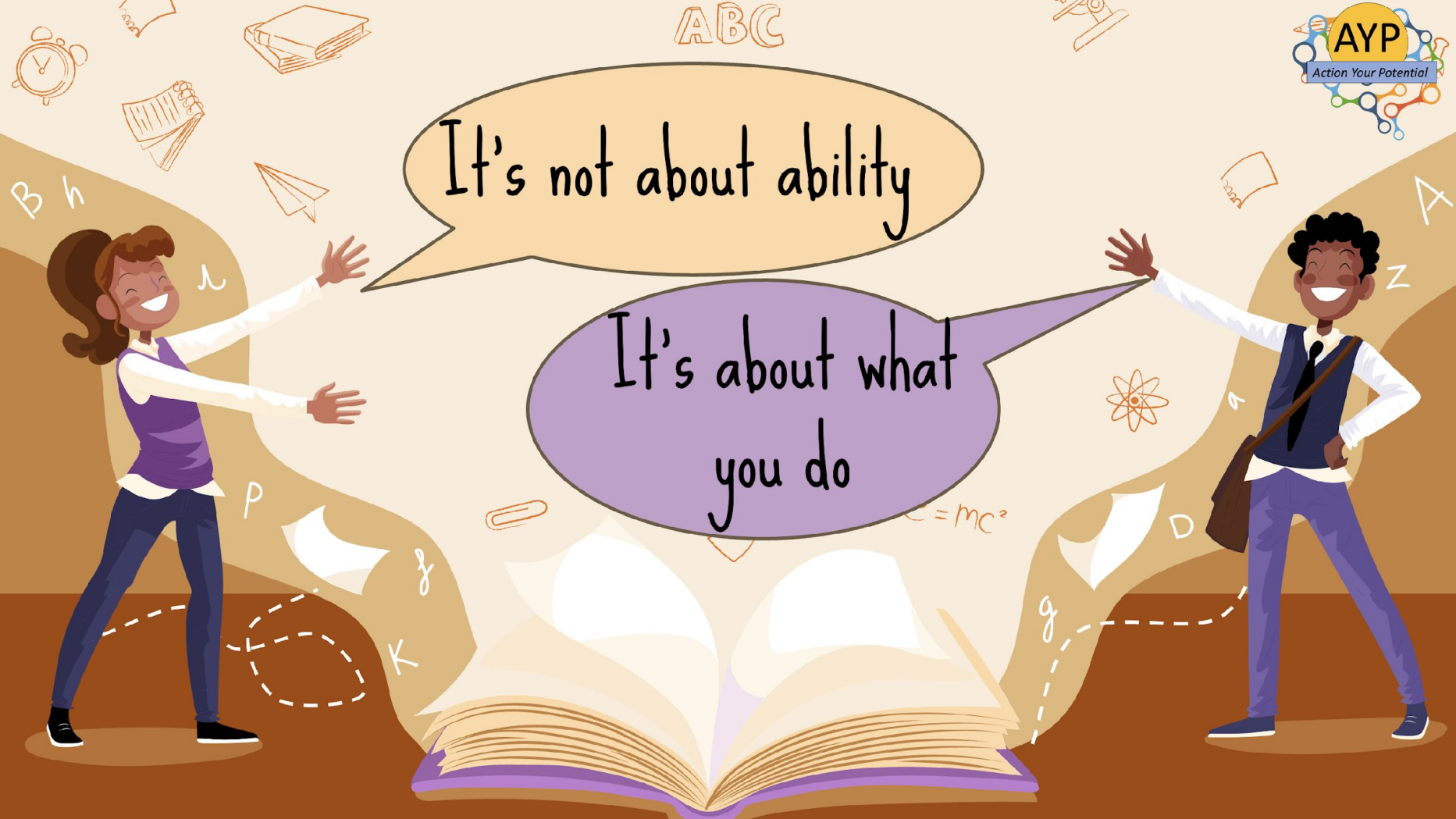


#NeuroNinja's understand that we are all sculptures of our brain's neural architecture

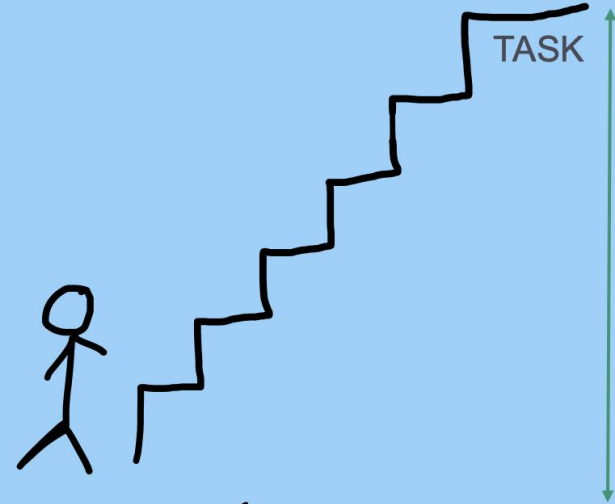
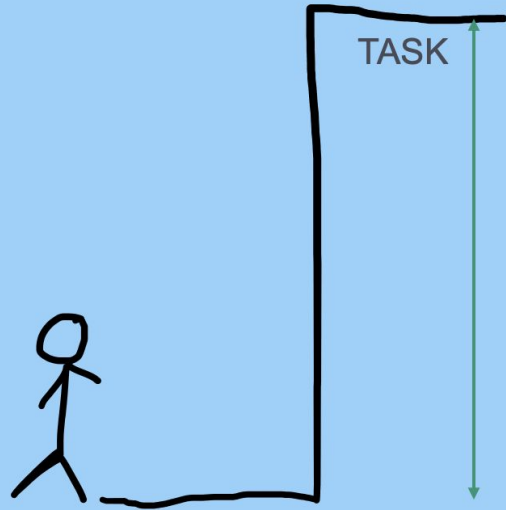
ABC

It's not about ability

It's about what you do



Without a plan Vs With a plan



Graded exposure

We're here to solve the GCSE problem

Become a #NeuroNinja this year & change your world

We worked with over 3000 really inspiring young people last year and we listened very carefully to what they told us about the barriers they faced to learning, growing and achieving.



This is what they said:

- ➔ Procrastination (wasting time, rather than being productive)
- ➔ Low mood, low motivation
- ➔ Not knowing how to revise effectively
- ➔ Feeling overwhelmed
- ➔ Wide ranging anxiety about exams, their futures & the planet's future
- ➔ Never feeling good enough



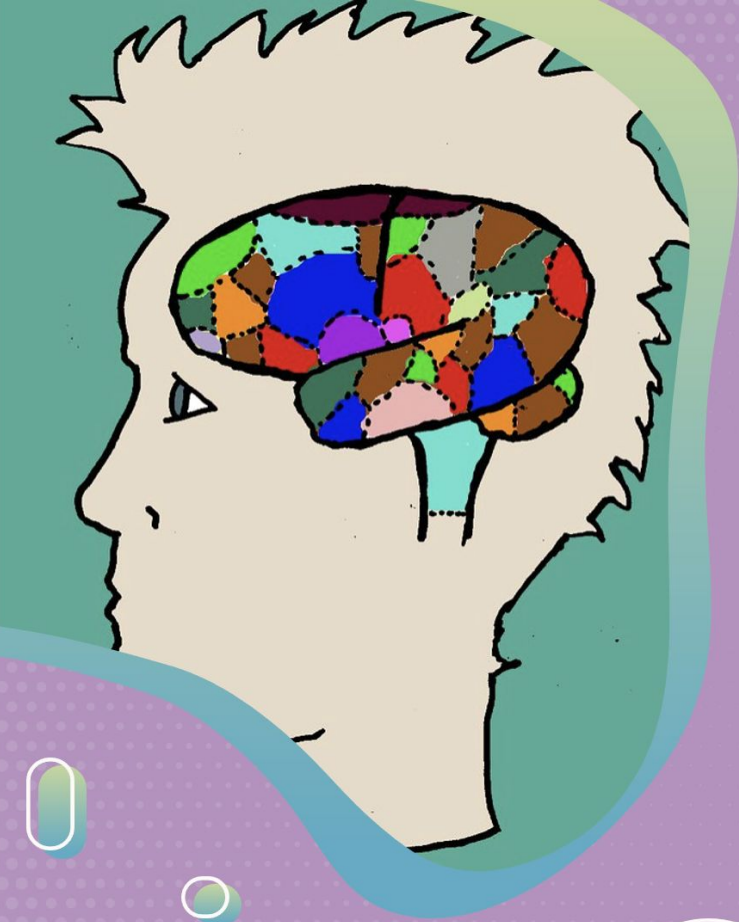
This:

People don't decide their futures, people decide their habits and their habits decide their futures.



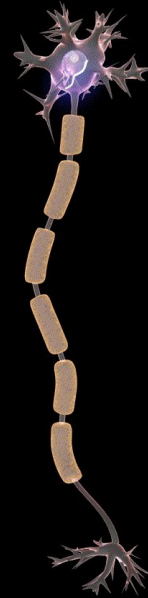
Your brain changes on the basis of
what you use it for...

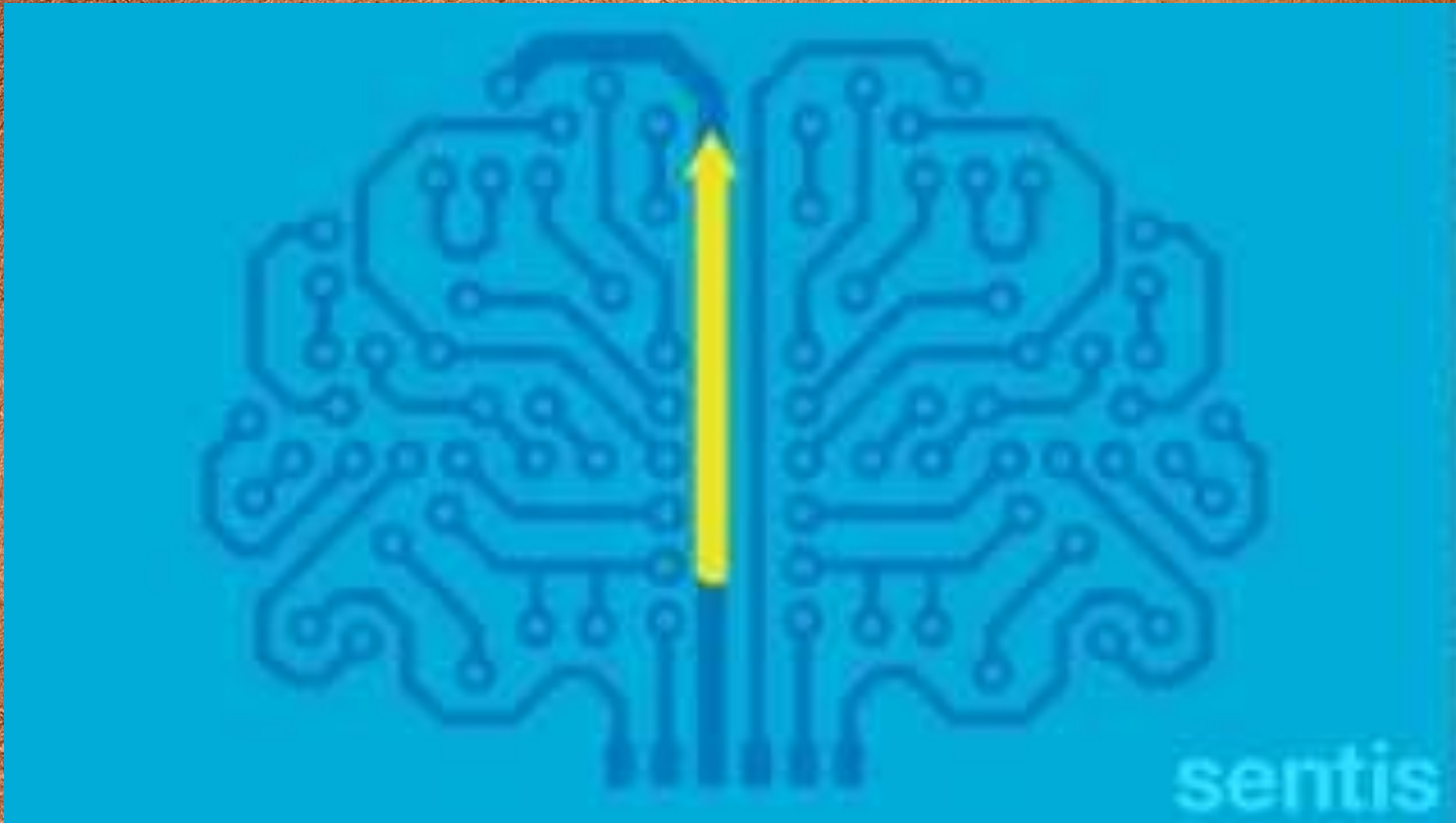
If you repeatedly practice something, your brain
and body make it easier for you to do that thing
regardless of whether you like that thing, or it is
good for you...



Axon

The biological wire,
moves electrical
impulse from one end
of brain cell to the
other



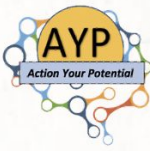




Frazzlement



*Physical and mental health are not
separate...*

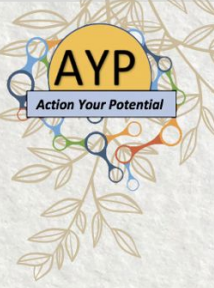


How do we achieve "presence" (focus and attention on what we're doing right now)?

We need mental flexibility



The 12 Rocks of Well-Being



Rock 1 - Sleep: 8-9 Hours a night

Rock 2 - Exercise: 20 minutes per day

Rock 3 - Eat and drink healthily

Rock 4 - Mindfulness: 5-10 mins per day

Rock 5 - Mind wandering: allow your mind to problem solve

Rock 6 - Manage emotions: notice, accept, share

Rock 7 - Walk outside in nature

Rock 8 - Listen to music

Rock 9 - Connect with friends and family

Rock 10 - Gratitude and Kindness: express both explicitly

Rock 11 - Flow: do what you love

Rock 12 - Learn, play, create, read

Habits are built from



A Cue

A trigger in our environment or in our head

A Behaviour

A response or activity linked to that cue.

A Reward

A benefit, often a dollop of dopamine

To Build A New Habit...



Awareness..

01



*..of what we
want to tweak
and why*

Choose..

02



*..small steps
first, cues in
time and space*

Try..

03



*..repeatedly,
until it becomes
a habit*

Stretch..

04



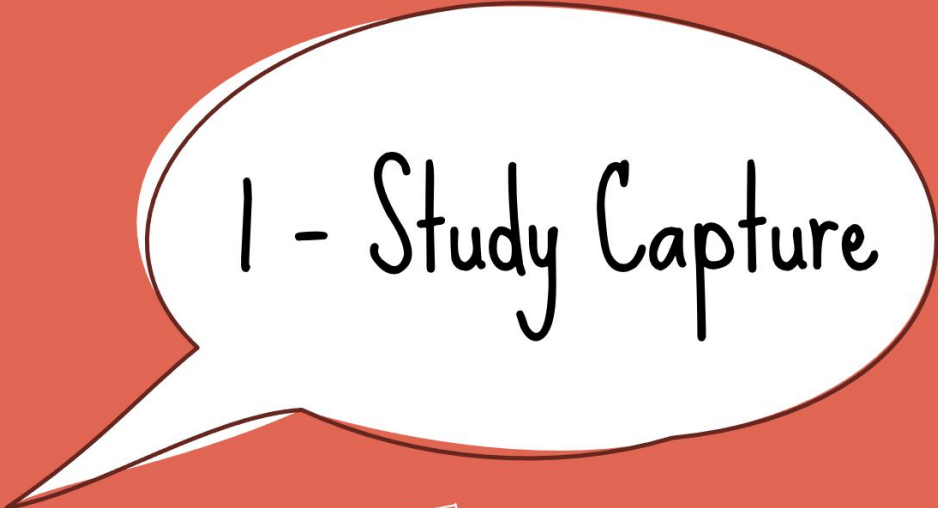
*..optimise and
develop the
habit*

A C T S

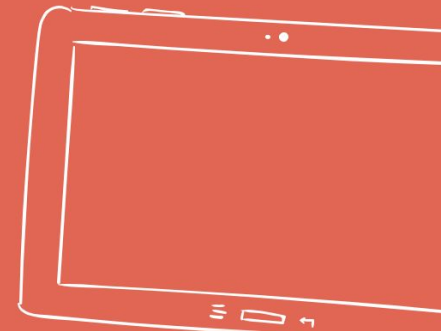


The Study Habit – each day

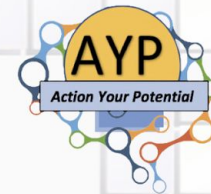
- 1. Study Capture (5 mins)*
- 2. Box & Frayer Flash Cards (5 mins)*
- 3. Mind Map Build / Review (5mins)*
- 4. Effortful Subjects (10 mins)*



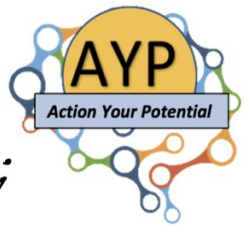
1 - Study Capture



Study Capture Sheet



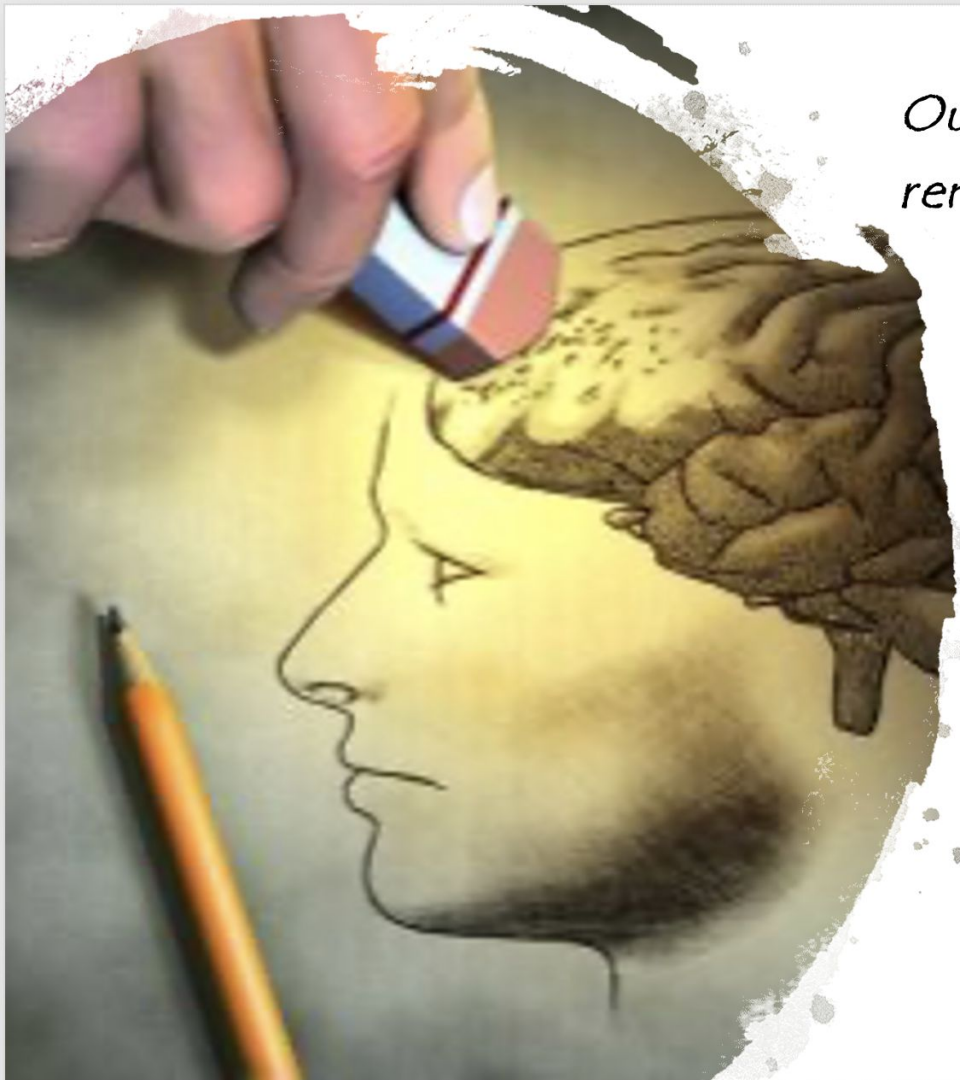
Date	Subject	Topic	Key Take away	Key words	Rating
Monday					
Tuesday					
Wednesday					
Thursday					
Friday					



Our Brain finds it easiest to remember information that is;

- 1. Dangerous to us*
- 2. Salient (Interesting to us)*
- 3. Repeated*

So...If you don't repeat, your brain will delete...



But...

Within 1 Hour - you have forgotten 56% of it

Within 1 day - 67%

Within a Week - 75%

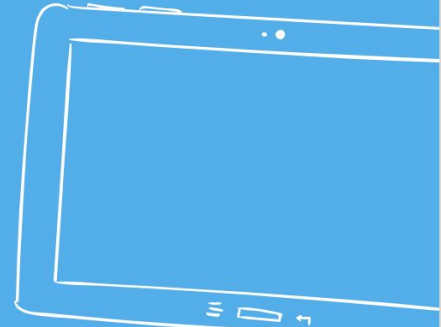
How we think
we Learn...

I've got it - lets
move on

Ebbinghaus Forgetting Curve



2 - Flash Cards



Science Example

Front

what is
'current?'

Back

A flow of electrons
measured in amps
(A)

Frayer Flash Cards

Statement

Write a simple statement about what you are making the flashcard about

Elaborate

Give more explanation

Example

Provide any examples

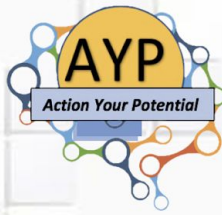
Image

Include a helpful image

Flashcards

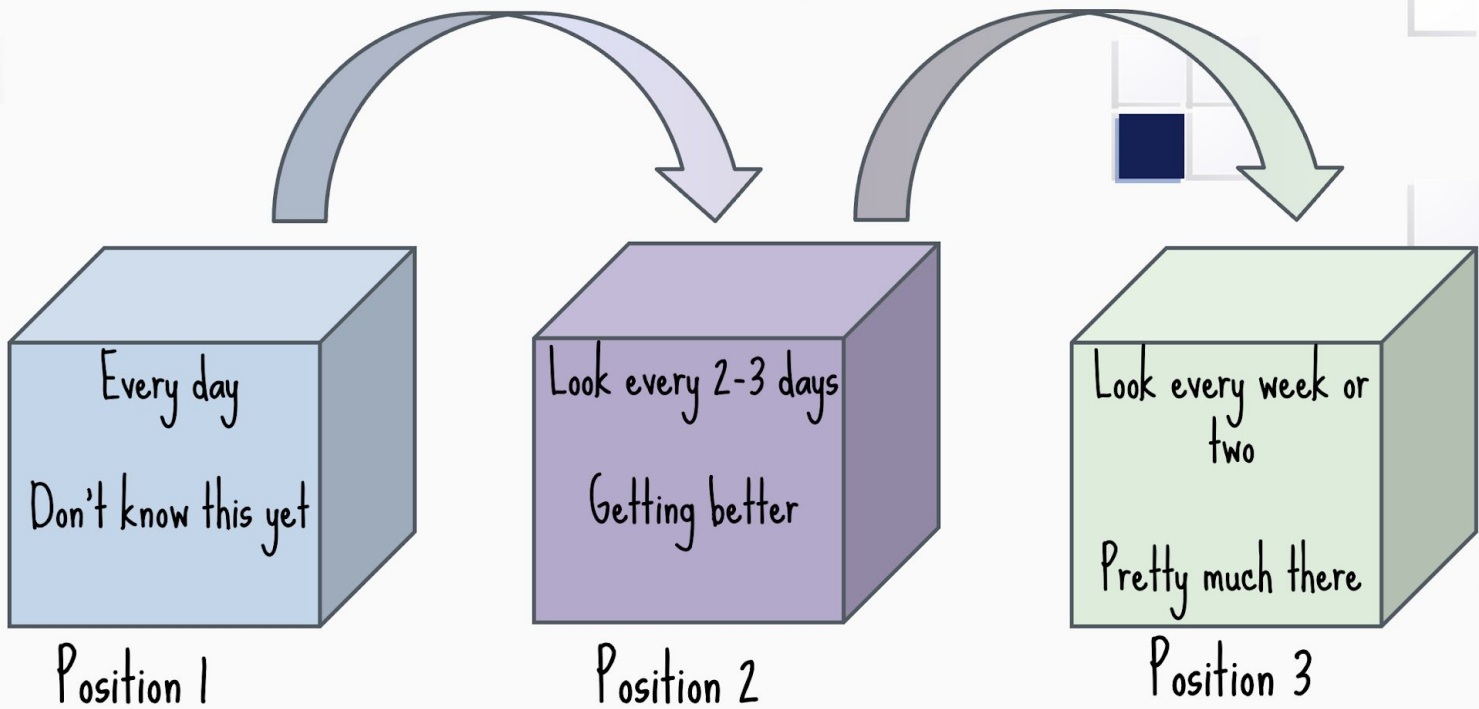
Day	Colour of flashcard	Subject

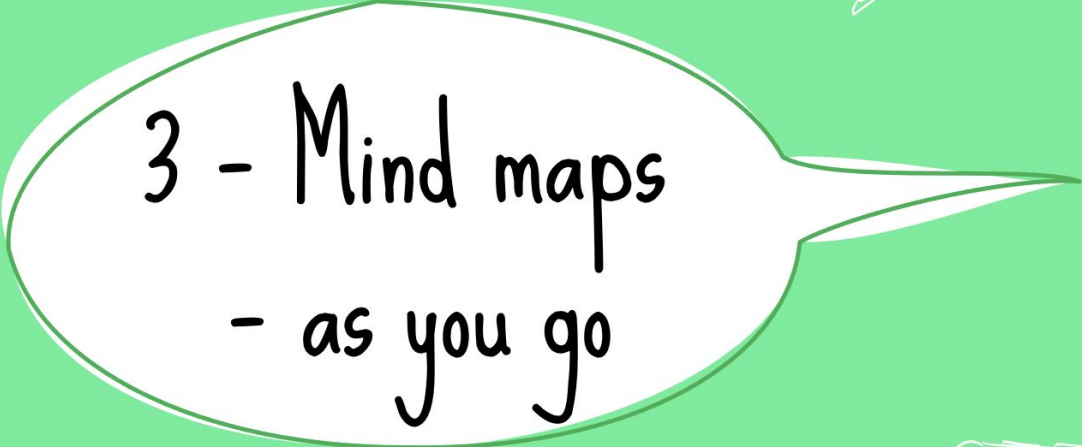
Flashcards - e.g.



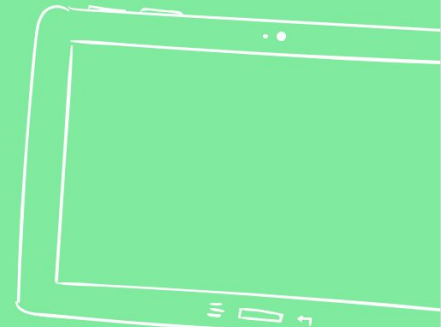
Day	Colour of flashcard	Subject
Monday week 1	Pink	English
Tuesday week 1	Green	Maths
Wednesday week 1	Yellow	French
Thursday week 1	Orange	Geography
Friday week 1	Day off	Day off
Saturday week 1	Blue	Biology
Sunday week 1	Day off	Day off
Monday week 2	Pink	History
Tuesday week 2	Green	PE
Wednesday week 2	Yellow	Art
Thursday week 2	Orange	Chemistry
Friday week 2	Day off	Day off
Saturday week 2	Blue	Physics
Sunday week 2	Day off	Day off

The box system

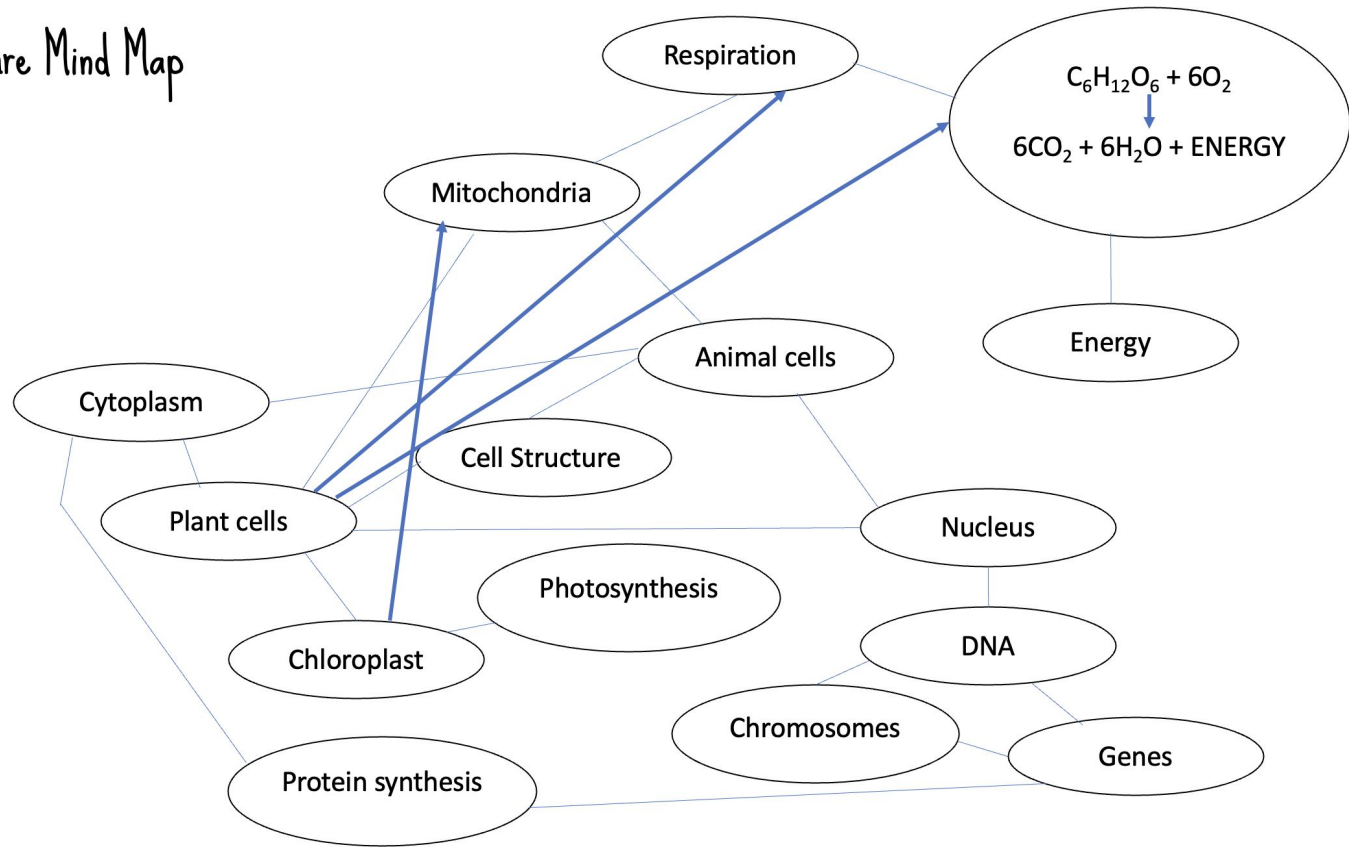


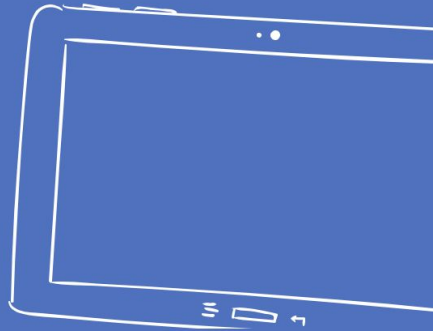
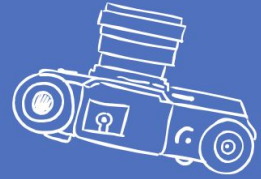


3 - Mind maps
- as you go



Cell Structure Mind Map

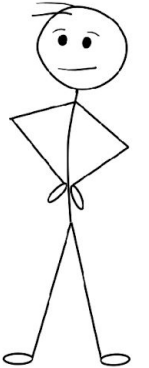
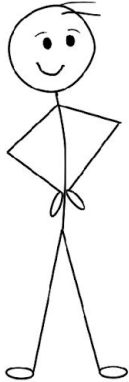


A large, white speech bubble with a brown outline is centered on the page. It contains the text '4 - Effortful Topics' in a black, handwritten-style font. The bubble's tail points towards the bottom right.

Confidence Chart - GCSE



Subject	Grade You Want	Grade Stretch Goal	Current Confidence level		
			😊	😐	😞
			😊	😐	😞
			😊	😐	😞
			😊	😐	😞
			😊	😐	😞
			😊	😐	😞
			😊	😐	😞
			😊	😐	😞
			😊	😐	😞
			😊	😐	😞
			😊	😐	😞
			😊	😐	😞
			😊	😐	😞
			😊	😐	😞
			😊	😐	😞





If it doesn't
challenge you, it
doesn't change you..



Be in no doubt you
can do this...



You change your brain



You change your mind



You change your world.