

Welcome to

Bishop Luffa

Church of England

School

Year 9

Parents' and Carers' Information Evening

Tuesday 9th September 2025

What are you looking forward to in Year 9?



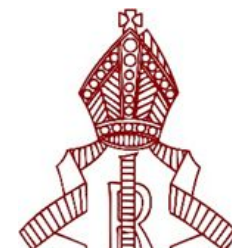
‘PE lessons’

‘Spanish trip’

‘Looking forward to options and choosing subjects’

THE BIG WALK 2025

Tuesday 7th October



Organisational changes from Year 8 into Year 9



| Set half year group classes | Mixed ability half year group classes |
|------------------------------------|---|
| Languages | PE and PSHE |
| Communication studies | Arts Faculty subjects - Art, Computer Science, Music, Drama |
| Maths | Humanities Faculty subjects - History, Geography, RE |
| Science | All Technology subjects - students study 1st choice tech and one other all year. |
| English | |



Curriculum progression

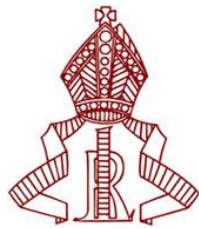
- KS3 and KS4 prepare students for GCSE.
- Science (Feb Half term) and Maths (Sept) formally start GCSE courses in Year 9

Attendance

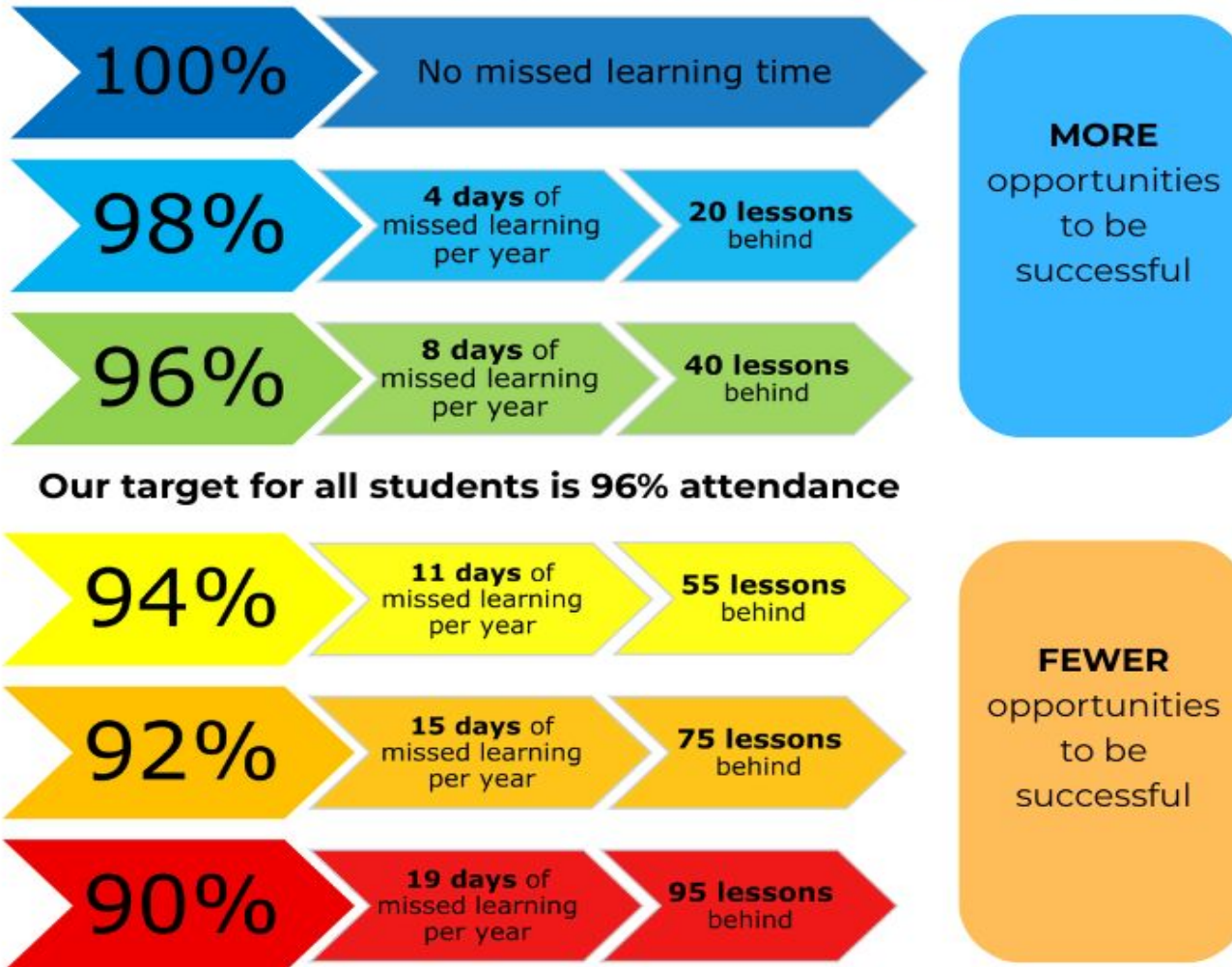


- You can view your child's statutory AM and PM attendance on Arbor
- Parent / Carer update regarding your child's attendance will be sent every half-term
- New, stricter guidance from the DfE regarding attendance, punctuality and absences that can and cannot be authorised
- Authorised holiday in term time absence code has been removed
- Every day in school helps students learn, grow, and belong
- There is a proven link between attendance and better outcomes

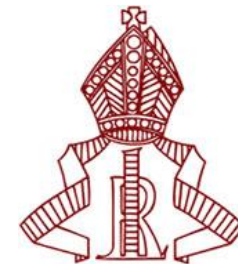
Attendance



Attendance Matters – Make Every Day Count



Attendance



Year 11 GCSE results, by attendance

| Attendance | Average GCSE Grade | |
|-------------|--------------------|------|
| | 2025 | 2024 |
| Above 95% | 5.9 | 5.7 |
| 90.1% - 95% | 5.1 | 5.1 |
| 80.1% - 90% | 3.9 | 4.6 |
| 50.1% - 80% | 3.4 | 2.9 |
| Below 50% | 2.2 | 2.9 |

Attendance



If your child is going to be absent, please contact the school by:

- emailing the dedicated absence address absence@bishopluffa.org.uk
- or calling the dedicated absence line on 01243 832681
- or the main school switchboard 01243 787741 and selecting Option 1

Our phone lines can be busy in the morning, so we would appreciate it if parents and carers could **use the email address whenever possible.**

Wellbeing @ Bishop Luffa



Your child will be supported by their Form Tutor and Head of House as their first point of contact.

If your child needs to talk to somebody in school, we now have 4 pastoral support staff: Mrs Conway, Mrs Roberts, Mrs Smith and Mrs Barkey.

The school website has a Wellbeing section with useful websites and information.

The school has subscribed to [TeenTips](#) which has a variety of resources for teenagers and parents to access. You will shortly receive an email with login details.

Artificial Intelligence Advice



- Stay Informed and Involved
- Encourage Digital Literacy
- Use AI Tools Together
- Set Boundaries and Screen Time Limits
- Prioritise Human Connection
- Aim for Transparency

Options Key Dates



Monday 5th January 2026

- Year 9 Options begin with distribution of the Options booklet

Thursday 15th January 2026

- Year 9 Options Information Evening & Subject Fair for parents and carers only (5.30pm start)

Monday 19th January 2026

- Deadline for Y9 Preliminary online choices deadline

Thursday 29th January 2026

- Y9 Parents' and Carers' Virtual Consultation Evening (4.00pm - 7.00pm)

Monday 2nd February 2026

- Y9 Final online choices deadline

Options - What could be happening now?



- Students need to start to think about the subjects they would like to continue in Year 10
- Discussing their thoughts with you as parents and carers
- Conversations with teachers about different subjects

Angie Hopp, Careers Co-ordinator

hoppa@bishopluffa.org.uk



- Work Experience – Years 10
- GCSE options support
- Careers Fair
- Year 9 & Year 10 Enterprise Days
 - Employer talks
- Drop in sessions - break/lunchtimes



Assessment and reporting



Wednesday 15th October 2025 (Effort and Target Grades)

- Effort Grades
- Targets for the end of KS3

Wednesday 14th January 2026 (Progress Grades)

- Effort Grades
- Target attainment (For the end of KS3)
- Current attainment (step and L,D,M)
- Projected attainment (For the end of KS3)

Friday 17th July 2026 (Written Report)

- Effort Grades
- Target attainment (For the end of KS3)
- Current attainment (step and L,D,M)
- Projected attainment (For the end of KS3)
- Written comment from class teacher

Assessment



Assessment mapped by faculties to inform reporting and progress.

'Formal' exams in the sports hall build familiarity with the demands of this environment.

Revision and preparation for these exams allows students to develop the skills needed to be successful.

Bishop Luffa *C of E* **School** **Parents and Friends** **Association**

**Parents' and Carers' Induction
Evening**

Tuesday 9th September 2025

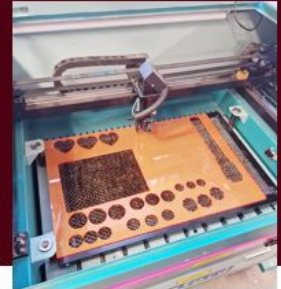




Who Are We?

- The Parents and Friends Association at Bishop Luffa
- The PFA helps support the school, providing those 'extras' that the school budget simply cannot cover.
- Some of our costs include
 - providing minibuses,
 - contributing to the school Counselling service
 - Large expenditure on equipment for various departments
 - Providing start up money for ventures

What We Do



Events We Put On

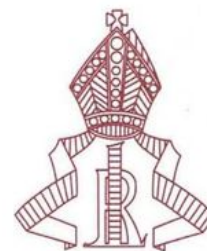
- Burn's Night
- Year 11 Prom
- Discos
- Quizzes
- Raffles
- Pre-Loved Uniform Shop
- Prom Dress Sale
- Cheese & Wine Evening

How We Support The School

- The Big Walk
- Fruition
- Inter House Events
- Refreshments for many school events
- Purchase of Equipment for various Departments
- Providing startup capital for initiatives
- DIAMOND LEGACY PROJECT as part of 60th Celebrations

How Can You Help?

- **Without support the 'extras' cannot be provided.**
- **Events we put on need to be well attended to generate funds for the children**
- **Micro-Volunteering**
 - Helpers always needed to serve refreshments.
 - PFA events amount to approximately 582 hours of volunteer time per academic year.
 - 1 hour a year volunteer time from one parent or carer of each child would allow more events and raise even more important funds for the school
 - Join our Facebook page to keep up to date with PFA matters.
- **Come to a meeting or two**
 - Meetings are informal. Meeting dates are on the Parents and Carers section of school website or on PFA Facebook page
 - No idea is a bad idea. You may just be the person to help turn an idea into a reality
 - You might have skills you can offer, even if just for a one-off event
 - You just need the desire to want the best for the children
 - AGM on November 13th when committee members for a year are elected.
- **Gift aid or donate**
 - If you can't help in person, please consider a small regular monthly donation as little as £1.
 - With Gift Aid we receive a rebate increasing your kind donation by 20%
 - [Easyfundraising](#) – no cost to you. Just register and generate funds for the school when you shop online.



ON BEHALF OF THE BISHOP LUFFA PARENTS AND FRIENDS ASSOCIATION

We look forward to welcoming you to our meetings!
Or email us : pfa@bishopluffa.org.uk

Thank you for attending

Bishop Luffa

Church of England

School

Year 9

Parents' and Carers' Information Evening