

# Bishop Luffa School

*Part of the Bishop Luffa Learning Partnership*

Westgate Chichester West Sussex PO19 3HP

A CHURCH OF ENGLAND SCHOOL

Telephone: 01243 787741

Head: Mr Austen Hindman

[www.bishopluffa.org.uk](http://www.bishopluffa.org.uk)

13<sup>th</sup> June 2023

Dear Parents and Carers,

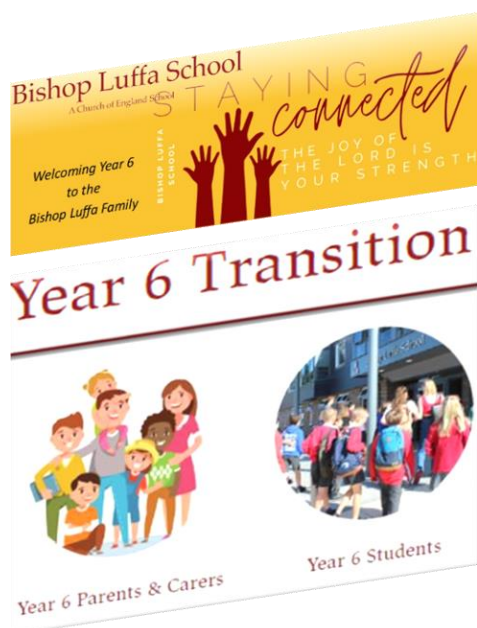
## Transition Tuesdays 2023 – Week 2

I hope that you are all well and have had a good week.

Since last week, our experienced Pastoral Team has been busy visiting Year 6 students at their primary schools. Visits started on Monday 5<sup>th</sup> June and will conclude on Friday 16<sup>th</sup> June. Our staff have thoroughly enjoyed the opportunity to meet your children and we cannot wait to see them all together on Wednesday 5<sup>th</sup> July for their transition day, and the next important stage of welcoming them to the Bishop Luffa family.

The reports back from our staff following their visits have been overwhelmingly positive. Your children have been excited to talk about how much they are looking forward to joining us in September and have also been prepared to share some of the worries that they have. Last week's [activity](#), **Going to Secondary School – How do you feel?**, will have prompted lots of questions, and our Pastoral Team were certainly met with plenty when they visited!

Visiting staff have reminded Year 6 that if/when they think of questions after they've left, they can still ask us by emailing [Year6Questions@bishopluffa.org.uk](mailto:Year6Questions@bishopluffa.org.uk). This is overseen by staff, but our Year 7 students will be providing the answers, which are emailed back, and also collated [here](#) on the transition section of our school website.



You can access the transition pages [here](#). There's a section for Year 6 students, and one for parents and carers. We are reviewing the content with our House Buddies, and sections will continue to be updated.

Our suggested task for this week is to spend time together with your child, looking at the pages and finding out more about the school and what to expect next year.

Next week, we will begin working on House allocations – we appreciate that you and your child are keen to know which House they will be in. Please be patient as we handle a large amount of information and carefully manage a number of factors to ensure that each Tutor Group is just right. This includes selecting the Form Tutor, and we will tell you who they are when we share the news about House allocation.

Bishop Luffa Learning Partnership ([www.bishopluffa.org.uk](http://www.bishopluffa.org.uk)) Registered office: Westgate, Chichester, West Sussex PO19 3HP  
A Charitable Company Limited by Guarantee Registered in England and Wales ~ Registered No. 8749379



INVESTOR IN PEOPLE



Finally, last week I included information about the Childrens' Learning and Well-Being Audit for parents and carers (CLAWBA). Completing the form is optional, and we are very grateful for anything you would like to share with us, so we can plan the best possible support for you and your child. Please use [this link](#) to the form.

Please remember we are here for you throughout your child's transition into Year 7. If you have any concerns or questions, please let us know by emailing [transition@bishopluffa.org.uk](mailto:transition@bishopluffa.org.uk)

Warm regards,

A handwritten signature in black ink, appearing to read 'Neil Topley', with a stylized flourish at the end.

Neil Topley  
Assistant Headteacher